



The Open Civil Engineering Journal

Content list available at: www.benthamopen.com/TOCIEJ/

DOI: 10.2174/1874149501711011013



REVIEW ARTICLE

The State of Art on Super Structural Testing Machine in China

Yubin Ma¹, Jinbao Ji^{1,2,*}, Weiming Yan^{1,2} and Jing Han¹¹Beijing Key Laboratory of Earthquake Engineering and Structural Retrofit, Beijing University of Technology, Beijing 100124, China²Beijing Collaborative Innovation Center for Metropolitan Transportation, Beijing 100124, China

Received: September 28, 2016

Revised: December 31, 2016

Accepted: January 12, 2017

Abstract: As important test equipment to carry out full-scale structure testing and components failure mechanisms research, super structural testing machines have developed rapidly all over the world in recent years. The authors of this paper investigated, compared and analyzed the construction and the development trends of super structural testing machines in China. The test functions, the test space, the maximum tonnage and other technical indexes of super structural testing machines, which have been built in China, were described. The functions and the typical tests of a multi-functional structure test loading system (40,000 kN) installed in the Beijing University of Technology were also discussed. The vibrations caused by the failure of brittle test pieces on this super structural testing machine were analyzed, and some suggestions to reduce the vibrations were given. It would be valuable for further development and the improvement of other super structural testing machines.

Keywords: Structural testing machine, Structure test, Brittleness specimen, Environment vibration, State of art, Tonnage.

1. INTRODUCTION

With the rapid growth of economy and continuous progress of industrial technology, civil structures are becoming larger and more complicated. Large-scale joint tests, large-scale structural tests and full-sized structural tests are essential for sophisticated structures. Therefore, an increasing number of super structural testing machines have been built around the world.

Super structural testing machines are essential test equipments to study the failure mechanisms of full-scale structures and components. Countries are scrambling to develop super structural testing machines with large tonnage (load >10,000 kN) [1]. In this paper, the functions and the applications of some major super structural testing machines are summarized and analyzed. The performance and the typical tests of a multifunctional structure loading system (40,000 kN) installed in the Beijing University of Technology are introduced in detail. Some problems related to the development of super structural testing machines are discussed.

2. DEVELOPMENT OF SUPER STRUCTURAL TESTING MACHINE

2.1. Development of Super Structural Testing Machines in the World

In the 1960s, the development of super structural testing machines began in Japan, which owns the largest number of testing machines in the world, involving universities, research institutes, steel enterprises, construction companies and shipbuilding factories [2 - 4]. Vertical testing machines and horizontal testing machines are two types of super structural testing machines. The vertical testing machine is mainly used for compression tests and is composed of a base, columns and beams. The loading cylinder is generally placed underground in order to lower the center of gravity and ensure stable loading. The upper beam and the lower beam are driven by a single or multiple cylinders to load specimens. Eccentric loads and vibration shock are mainly borne by the external frame. The horizontal testing machine

* Address correspondence to this author at the Beijing Key Laboratory of Earthquake Engineering and Structural Retrofit, Beijing University of Technology, Beijing, China; Tel: 0086-13161288669; E-mail: jinbao@bjut.edu.cn

is mainly used for tensile tests, which do not need a huge base and large space. It is mainly composed of cylinders, columns, left beam and right beam. The two beams with trolley wheels can move freely on the rail, resulting in a long travel and a large load. The machine is suitable for test specimens that are long and heavy.

The loading capacity of super structural testing machines improved continuously with the strong support of government and other relevant agencies. During the early days, the loading capacity of vertical testing machines in Japan ranged from 10,000 kN to 30,000 kN. The largest ones are Shimadzu structural compression testing machines (30,000 kN) installed in Nihon University and Public Works Research Institute (PWRI). The capacity of horizontal testing machines increased from 10,000 kN to 100,000 kN. The largest one is the Sumitomo Metal structural tensile testing machine (100,000 kN), which is installed in Sumitomo Industrial Technology Research Center. It was also the largest horizontal structural tensile testing machine in the world. The major super testing machines in Japan are shown in Table 1.

Table 1. The development of super structural testing machines in Japan.

No.	Type	Setting or Manufacturing Unit	Loading Capacity	Stroke	Cylinder
1	Vertical	Takenaka Corporation	10,000 kN	1000 mm	1
2		Japan Building Research Institute	10,000 kN	1000 mm	1
3		Kawasaki Steel Corporation	10,000 kN	1000 mm	1
4		Faculty of Engineering, University of Tokyo	20,000 kN	1000 mm	1
5		National Research Laboratory of Metrology	20,000 kN	—	1
6		College of Science and Technology, Nihon University	30,000 kN	1000 mm	5
7		PWRI of Ministry of Construction	30,000 kN	1200 mm	5
8	Horizontal	Shimadzu Corporation	12,000 kN	1000 mm	4
9		Shimadzu Corporation	17,000 kN	2000 mm	4
10		Osaka University	20,000 kN	300 mm	2
11		Tokyo Test Machine Manufacturing	24,000 kN	—	4
12		Hitachi Research Institute	28,000 kN	400 mm	4
13		MITI Ship Research Institute	30,000 kN	200 mm	1
14		Nippon Steel Yawata	30,000 kN	300 mm	4
15		Kobe Steel	30,000 kN	500 mm	4
16		MITI Ship Research Institute	40,000 kN	200 mm	—
17		Nippon Kokan (NKK)	50,000 kN	300 mm	—
18		Nippon Steel	80,000 kN	600 mm	4
19		Kawasaki Steel Corporation	80,000 kN	700 mm	4
20		Sumitomo Industrial Technology Research Center	100,000 kN	600 mm	4

In addition to the Japanese testing machines mentioned above, super structural testing machines of other countries are as follows. YAW7107 series electro-hydraulic servo pressure shear testing machines with the maximum loading capacity of 10,000 kN, which are developed by American Mechanical Testing and Simulation (MTS) Company. American MTS 311 series of large loading frame, the loading capacities of which are 10,000 kN, 15,000 kN, 20,000 kN, and 30,000 kN. Furthermore, there are the 20,000 kN compression testing machine of Federal Materials Testing Institute produced by Swiss Amsler Company [5], the 54,000 kN universal testing machine installed in the National Bureau of Standards and the 22,700 kN universal testing machine both produced by American Baldwin Company [6], the American MTS 10,000 kN electro-hydraulic servo pressure shear testing machine, the 100,000 kN tensile testing machine of West German Schenck Company, the 20,000 kN testing machine installed in the Berlin Material Inspection Bureau [7], and the 100,000 kN hydraulic servo tensile testing machine installed in the National Materials Laboratory of University of Stuttgart.

2.2. The Development of Super Structural Testing Machines in China

China Changchun testing machine factory successfully produced the first 5,000 kN pressure testing machine [8] in 1959. In 1975, it produced a 6,000 kN universal structural testing machine. Although the loading capacity of this machine is smaller compared to the 10,000 kN testing machine, it is far more difficult to design and manufacture. It laid the foundation for the development and the production of super testing machines in China. In 1982, YES-1000 compression testing machine with a maximum loading capacity of 1000 kN was developed. The machine was composed of four vertical columns, two horizontal beams and a single cylinder; the distance between upper beam and

lower beam is 1,200 mm. Strictly speaking, this is the first super structural testing machine in China. Soon afterwards, factories and research institutes produced a series of high level testing machines. They initially applied electronic technology to control, measure and record then imported electro-hydraulic servo control system, and finally applied computer technology successfully.

At present, different types of large-tonnage test loading equipment are being developed and manufactured by Tianshui Hongshan testing machine factory, who can represent super testing machine manufacturers in China. Though the loading capacity of the machines increased gradually, the test function was still simple. For example, the 15,000 kN electro-hydraulic servo horizontal tensile testing machine is mainly used for tensile strength tests of long specimens, general metal or non-metallic materials. The 20,000 kN electro-hydraulic servo compression testing machine is mainly used for compression, flexural and shear tests of metals and compression and flexural performance tests of non-metallic materials [9]. The 30,000 kN electro-hydraulic servo multifunctional pressure shear testing machine is mainly used for mechanical property tests and comprehensive tests of large structures [10].

The first high-strength, wide-plate tensile testing machine in China is 20 m in length, 5 m in width and 4.5 m in height and has a maximum tensile capacity of 50,000 kN [11]. In 2006, the 52,000 kN electric-hydraulic servo bridge bearing testing machine, developed by Italian Alga Company for Zhuzhou Times New Material Technology Co., Ltd., was used for the static and dynamic performance tests of bridge bearing. It was the largest tonnage of domestic bridge bearing testing machine [12]. Beijing Fuli Tongda Science and Technology (FTS) Co., Ltd. also developed a multifunctional structural testing machine (40,000 kN) that can achieve various functions of vertical compression tests, vertical tension and compression tests and bidirectional pressure shear tests.

Besides, some other factories or research institutes also have the ability to develop testing machines, such as Changchun Testing Machine Research Institute, Jinan Testing Machine Group, Shenzhen SANS Group, Tianshui Hongshan Testing Machine Co., Ltd. and Shanghai Hualong Test Instruments Corporation [13]. With the urgent need of large-scale structure testing in the research of civil engineering, many universities and research institutes' laboratories in China are also equipped with super structural testing equipment, as shown in Table 2.

Table 2. The development of super structural testing machines in China.

No.	Setting or Manufacturing Unit	Equipment Name	Load Capacity	Space
1	Dalian University of Technology	Electro-hydraulic servo compression testing machine	10,000 kN	—
2	Huazhong University of Science and Technology	Electro-hydraulic servo loading system	20,000 kN	—
3	Tongji University	Large multifunctional structural experiment system	10,000 kN	4 m×2 m×5 m
4	Tongji University	General purpose loading system(GPLS)	30,000 kN	Up to 6.1 m
5	Tsinghua University	Spatial multifunctional structure loading device	20,000 kN	6 m×6 m×8 m
6	The Hong Kong Polytechnic University	Large multifunctional structural testing system	10,000 kN	—
7	Beijing University of Technology	Multifunctional structure loading system	40,000 kN	6 m×4 m×8 m
8	Taiwan National Earthquake Engineering Research Center	Multi-axial testing system(MATS)	60,000 kN	Up to 5 m
9	Tianshui Hongshan testing machine Co., Ltd.	Large multifunctional electro-hydraulic servo pressure shear testing machine	30,000 kN	Up to 0.3 m
10	Nanjing University of Technology	Pressure shear testing machine	10,000 kN	—
11	Shanghai Institute of Technology	Large electro-hydraulic servo multifunctional structure testing system	10,000 kN	—
12	Nantong University	Large multifunctional structure testing system	10,000 kN	—
13	Beijing Fluid Control System Corp.	Rubber bearing pressure shear electro-hydraulic servo testing system	20,000 kN	—
14	Shanghai Jiao tong University	Large structure testing system	10,000 kN	—
15	Tianshui Hongshan testing machine Co., Ltd.	High strength wide plate tensile testing machine	50,000 kN	5 m×2.2 m×0.12 m
16	Zhuzhou Times New Material Technology Co., Ltd	Electro-hydraulic servo bridge bearing testing machine	52,000 kN	2 m×2 m×1.15m
17	Southwest Jiaotong University	Multifunctional bridge rubber bearing testing machine	120,000 kN	—
18	Jilin University	Super large dynamic and static multifunctional testing machine	120,000 kN	4 m×2 m×10 m
19	China state construction technical center	The facility of advanced structural testing(FAST)	108,000 kN	Up to 10 m

Tongji University has built a large multifunctional structural experiment system (10,000 kN) with an investment of 6 million yuan RMB by the funding of Shanghai's leading academic discipline project and the Ministry of Education "211 Project", as shown in Fig. (1) [14]. The main body of the machine is a double-door type frame structure with the beam that can move up and down along the columns. The servo control system has six channels, enabling simultaneous 10,000 kN compression and 3,000 kN stretching, 3,000 kN upper lateral push and 1,500 kN lower lateral pull with original follow-up servo control mode. The testing machine has a test space of 4 m×2 m×5 m (length × width × height) that enables the stress state of large structural component under complex loads to be simulated.



Fig. (1). Large multifunctional structural experiment system.

The large structural multifunctional spatial load device, developed by Tsinghua University and Beijing Fluid Control System Corporation, is composed of a three-dimensional frame and a steel-concrete composite bottom beam foundation below the ground. It is a self-balancing system that can carry out three-dimensional loading [15], as shown in Fig. (2). The device can be used for electric hydraulic servo coordination loading of structure or component in any position by adopting an innovative hydraulic step lifting mechanism. The maximum spatial dimension of the structure is 6 m×6 m×8 m (length × width × height). The maximum vertical load is 20,000 kN, and the maximum horizontal load is 3,000 kN.



Fig. (2). Large structural multifunctional spatial load device.

The large multifunctional structural testing system of The Hong Kong Polytechnic University, manufactured by Hangzhou POPWIL Electromechanical Control Engineering Co., Ltd., is mainly used for the mechanical performance tests of beams, columns, joints, walls and framed structures, as shown in Fig. (3). The body of the machine is a double-door type frame structure, and the test space can be adjusted by the movement of the beam along the columns. The maximum vertical load is 10,000 kN and the maximum horizontal load is 1,500 kN.



Fig. (3). Large multifunctional structural testing system.

The new multi-axial testing system (MATS) installed in Taiwan National Earthquake Engineering Research Center adopts the design of prestressed concrete and is a six degree of freedom testing system. The main frame is made up of two A-shaped prestressed reinforced concrete members and reinforced concrete foundation, as shown in Fig. (4). It can accommodate specimens with a maximum height of 5 m. The maximum vertical load capacity is 60,000 kN, the maximum horizontal tensile capacity is 7,000 kN approximately and the maximum horizontal displacement is 1.2 m. The multi-axial testing system can carry out the tests of vibration isolation bearing, column, velocity-type damper, diagonal brace member, beam-column joint and shear wall.



Fig. (4). Multi-axial testing system (MATS).

2.3. The Development Trends of Super Structural Testing Machines

In recent years, super structural testing machines have largely developed in China. It has increasingly become one of the most essential test equipments of research institutes. With the progress of industrial technology, scientific research has higher requirement for super structural testing machines both in terms of the quantity and the function. Super vertical testing machines have been developed from a simple compression testing machine to an intelligent electro-hydraulic servo control multifunctional universal testing machine, which can carry on compression, bending, tension and low cycle fatigue tests. The development of super structural testing machines has the following trends:

1. High load capacity, large test space. As the size of structures or component models gradually becomes larger, test equipment with larger test space and higher tonnage loading capacity is needed.
2. Intellectualization and automation of control system. The rapid development of micro electronic technology provides for the automation and intelligence of super structural testing machine to realize the intelligent adjustment of control system and the automatic processing of test data.
3. Multifunction and high performance. In order to meet the different requirements of test, the function of testing machines need to expand, the multichannel coordinated loading mode and the simulate conditions of actual multi degrees of freedom need to develop.
4. High precision, high stability. Apply advanced control algorithm to improve the test precision accurately according to the given conditions of the test, and reduce the vibration of machine equipment caused by the fracture of specimen.
5. Electro mechanical hydraulic integration. The advanced mechanical and electronic technologies should be fully utilized to promote perfection and high integration of the whole hydraulic system.

3. MULTIFUNCTIONAL STRUCTURE LOADING SYSTEM (40,000 KN)

3.1. Introduction of the System

Multifunctional structure loading system (40,000 kN) in the structure experimental center of Beijing University of Technology has a single 40,000 kN vertical main actuator, one set of 4,000 kN horizontal actuator and two sets of 2,000 kN vertical actuators [16]. The main frame is composed of four counterforce frames, a top frame, two beams (upper and lower), key teeth, loading cylinders and a foundation, as shown in Fig. (5).



Fig. (5). Multifunctional structure loading system (40000kN).

The specific test functions of the system are as follows:

1. Pseudo-static tests of prototype beam-column joints can be carried out by the combination of a 40,000 kN compression test machine and two sets of 2,000 kN dynamic loading system. Three-dimensional pseudo-static tests of beam-column spatial joints can also be carried out with an additional 500 kN dynamic loading system.
2. One-way or two-way compression shear tests of rubber bearings with a diameter of 1.8 m can be carried out by the combination of a 40,000 kN compression test machine and a 4,000 kN dynamic loading system.
3. Pseudo-dynamic tests of prototype beam-column joints with simulating seismic input at the bottom can be carried out by the combination of a 40,000 kN compression test machine and a 4,000 kN dynamic loading system.
4. Performance tests of dampers can be carried out by the combination of a 4,000 kN dynamic loading system and a test frame.
5. Fatigue tests of components can be carried out by a 2,000 kN dynamic loading system independently.
6. Pseudo-dynamic tests of model structures can be carried out by the combination of two sets of 2,000 kN dynamic loading system and other dynamic load actuators.
7. The 40,000 kN compression testing machine can be used independently as a general large tonnage material testing machine.

3.2. Problems Encountered in Typical Tests

At present, the system has completed more than 500 pieces of rubber cushion, prototype beam-column joints, eccentric columns and other tests.

However, the vibration caused by the sudden fracture of test specimen in the later stage of loading process has caused adverse effects when using the 40,000 kN main actuator for brittle specimen compression tests, as shown in Fig. (6). The vibration of the offices surrounding the laboratory is felt strongly. The acceleration of vertical vibration has been measured up to 3g, as shown in Fig. (7), which has seriously affected the work of teachers and students around the laboratory. The cracking and deformation of filler walls around the experimental center brings potential safety hazards. The upper beam, the lower beams, the key teeth and other parts of the testing machine are prone to fatigue damage under the strong vibration. The control system of the testing machine is easily damaged under repeated impact. A large number of full-scale masonry structures and plain concrete tests are unable to be completed due to the excessive vibration of the testing machine. Therefore, it is urgent to solve the vibration problem of the 40,000 kN testing machine.



Fig. (6). The axial compression performance test of brittleness specimen.

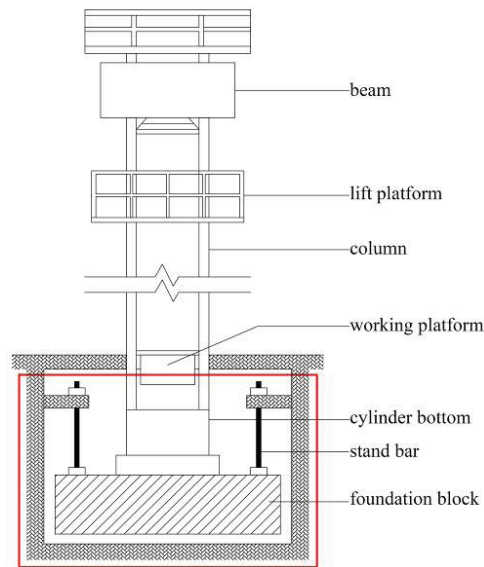


Fig. (9). Diagram of the elastic buffer block.

The fast-releasing energy could eject partial or full specimens from the testing machine, which can cause serious damages. In order to absorb the elastic energy that is released when the specimen is damaged, the elastic foundation, the spring damper and the hydraulic shock absorber are generally adopted, as shown in Fig. (10). The reduction of the vibration produced by the fracture of specimen cannot be ignored in the design of super structural testing machines.

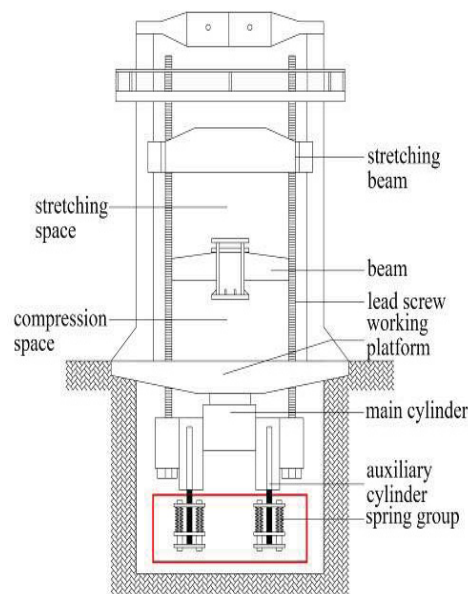


Fig. (10). Diagram of spring damper.

Xue Guangxin of Jilin University [17] carried out the dynamic analysis on vertical vibration of workbench due to the fracture of specimen of 100MN multifunctional test system. He proposed that dampers could be set up to reduce the vibration of the workbench. In the analysis for effects of specimen fracture on facility of advanced structural testing, Li Guoqiang [18] mentioned the use of a vibration isolation layer below the base of equipment to reduce the influence of the test system on the surrounding office area, as shown in Fig. (11). The number of vibration isolators has a significant effect on the vibration isolation effect. Too many isolators result in waste because each one cannot have a full play to the function. To the contrary, when the quantity is too small, damages can easily happen because the stress of the specimen is too large to exceed the technical requirement of the vibration isolator.

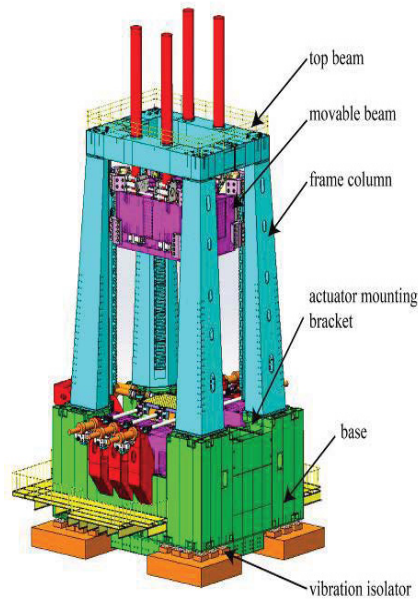


Fig. (11). Diagram of vibration isolation layer.

CONCLUSION

In this paper, the development of super structural testing machines all over the world is summarized. The test function, the test space, the largest tonnage and other technical indexes of super structural testing machines in China are presented, and the development trends of super structural testing machines are examined. The brittleness test of a multifunctional structural loading system (40,000 kN) in the Beijing University of Technology is discussed. The magnitude of vibrations caused by the failure of specimens in the super structural testing machine is analyzed, and some vibration reduction methods are suggested. Adapting such methods would be valuable for further development and improvement of other super structural testing machines.

CONSENT FOR PUBLICATION

Not applicable.

CONFLICT OF INTEREST

The authors declare no conflict of interest, financial or otherwise.

ACKNOWLEDGEMENTS

This work is sponsored by the Opening Foundation of Beijing Key Lab of Earthquake Engineering and Structural Retrofit.

REFERENCES

- [1] Q.L. Zhu, "Foreign super structural machine", *Engineering & Test*, vol. 06, pp. 43-53, 1981.
- [2] T.R. Wang, "The status of super structural testing machine in Japan (1)", *Engineering & Test*, vol. 3, pp. 46-52, 1985.
- [3] T.R. Wang, "Super structural testing machine in Japan (2)", *Engineering & Test*, vol. 04, pp. 39-50, 1985.
- [4] T.R. Wang, "Super structural testing machine in Japan (3)", *Engineering & Test*, vol. 05, pp. 47-53, 1985.
- [5] Q.L. Zhu, "2,000 ton compression testing machine", *Engineering & Test*, vol. 04, pp. 53-58, 1984.
- [6] Q.L. Zhu, "12 million pounds universal testing machine installed in the national bureau of USA standards", *Structural & Environmental Engineering*, vol. 02, pp. 1-9, 1977.
- [7] Q.L. Zhu, "Application of three stage servo valve in testing machine", *Engineering & Test*, vol. 3, pp. 58-65, 1984.
- [8] W.G. Pan, "Discussion on several problems in the development of super testing machine in China", *China Instrumentation*, vol. 2, pp. 22-23+17, 1983.
- [9] E. Zhang, *Structural design and analysis of the oversize multifunctional structure test loading system.*, Beijing University of Technology:

Beijing, China, 2005.

- [10] J.W. Zhang, J. Hong, D.C. Wang, and L.L. Zhang, "Development of large-scale multifunction load-shear test machine with electro-hydraulic servo control", *Chinese Hydraulics & Pneumatics*, vol. 06, pp. 64-67, 2010.
- [11] D. Yang, "Hongshan company developed the first domestic high strength tensile testing machine", *Tianshui Daily*. 2013-04-18(001).
- [12] M. Yan, L.F. Liu, and J.P. Cao, "52MN bridge rubber bearing test machine and its application", *Mechanical Engineer*, vol. 08, pp. 12-14, 2010.
- [13] X.L. Li, *Research on Measurement and Control System of 120MN Bridge Rubber Bearing Multi-function Test Machine*, Southwest Jiaotong University: Chengdu, China, 2012.
- [14] Z.Y. Shen, X.N. Guo, and Y.Q. Li, "Validation and analysis of loading performance of the 10000kN-large multifunctional structural experiment system", In: *Structural Engineers*, vol. 04. 2006, pp. 54-59+76.
- [15] Structural engineering institute of Tsinghua University, "Development of large structural multifunctional spatial load device", In: *Proceedings of the Symposium on Structural Testing and Testing Technology and Structural Testing in Civil Engineering*, CCES, Beijing, China, 2006.
- [16] L.M. Chen, Zh.B. Li, H.Y. Zhou, W.M. Yan, H.Q. Li, H.H. Huang, and J. Liu, "40,000kN multifunctional electro-hydraulic servo load system", *Structural Engineers*, vol. 27, pp. 27-30, 2011.
- [17] G.X. Xue, *Study on Mechanical Capability of 100MN Multifunctional Test System*, Jilin University: Changchun, China, 2015.
- [18] G.Q. Li, P. Wang, and J.Y. Sun, "Numerical analysis for effects of specimen fracture on facility of advanced structural testing (FAST)", *Journal of Vibration and Shock*, vol. 35, pp. 216-221, 2016.

© 2017 Ma et al.

This is an open access article distributed under the terms of the Creative Commons Attribution 4.0 International Public License (CC-BY 4.0), a copy of which is available at: <https://creativecommons.org/licenses/by/4.0/legalcode>. This license permits unrestricted use, distribution, and reproduction in any medium, provided the original author and source are credited.