



The Open Civil Engineering Journal

Content list available at: <https://opencivilengineeringjournal.com>



RESEARCH ARTICLE

Experimental Investigation of the Forklift Truck Impact on CFS Pallet Racks

Federico Gusella^{1,*} and Maurizio Orlando¹

¹Department of Civil and Environmental Engineering, University of Florence, Florence, Italy

Abstract:

Background:

Storage pallet racks are commonly formed by Cold-Formed-Steel (CFS) members and are used worldwide to store goods on pallets. The main racking system is denoted as “selective pallet racking”. This racking system is one pallet deep and is separated by aisles, allowing for each pallet, stored on horizontal beams, to be always accessible. Steel racking systems are frequently subjected to accidental impact forces from operating forklift trucks. If international racking design codes provide an arbitrary value of impact force to design members, several impacts can produce damages, which can lead to system failure, highlighting the fundamental role played by monitoring.

Methods:

Results of an experimental campaign on a full-size selective rack are presented. The investigated rack is subjected to the impact of a forklift truck and hammer test at different points. The propagation of the acceleration among adjacent bracing frames is investigated with the magnitude of the recorded strains in structural members.

Results:

Results highlight that an accelerometer every two spans can establish whether the monitored racking system is accidentally hit. Compressed diagonal and tensile diagonal work in parallel. Only one diagonal brace, every two spans, can be monitored through a strain gauge to establish the forklift truck impact point and estimate the stress distribution on adjacent members.

Conclusion:

The study suggests an optimization in the number, type and position of accelerometers and strain gauges in monitoring racking systems to identify forklift truck impact and its effects.

Keywords: Hammer tests, Forklift truck impact, Experimental campaign, Steel storage pallet rack, CFS members, Pallet.

Article History

Received: June 15, 2022

Revised: August 28, 2022

Accepted: September 8, 2022

1. INTRODUCTION

Steel racking systems are civil engineering structures that store goods and materials before their distribution to the public. To serve different logistic needs, a variety of rack typologies has evolved [1]. Selective steel storage pallet racks are the most common system and are characterized by a double entry, with goods stored on the beams. These structures behave like a semi-rigid moment frame in the down-aisle direction and as a bracing system in the cross-aisle direction. Research on rack components has taken place in many parts of the world because racks are popular for their ease of construction, customization, and economy [2].

* Address correspondence to this author at the Department of Civil and Environmental Engineering, University of Florence, Florence, Italy;
E-mail: federico.gusella@unifi.it

In the down-aisle direction, the structural response is mainly influenced by the beam-to-column connections, which are typically boltless connections formed by beams, welded to connectors with tabs, and columns, which have perforated cross-sections to accept the connector tabs joining beams and columns. Connection structural response has been fully investigated in recent years [3 - 15], such as the buckling load of perforated cold-formed steel members under combined loads [16, 17] or the flexural capacity of built-up cold-formed steel sections [18]. The influence of the upright thickness and connector type on the rotational stiffness and the ultimate bending moment has been explored [19], along with the effect of the pinching phenomenon on boltless joints [20, 21]. A numerical simulation of beam-to-column speed-lock connections has also been performed [22], showing that each weld configuration leads to different behavior in terms of capacity

and ductility. In a study [23], it has been observed that it is convenient to promote the failure of tabs instead of the weld to get a ductile response.

Along the cross-aisle direction, racks behave like a bracing system, and recent studies have underlined that the structural response is affected by the local flexibility of the joints, which reduces the effective stiffness of the bracing frame [24 - 27]. In a study [28], the Finite Element (FE) model of the upright frame has been improved by reducing the axial stiffness of the braces. Moreover, a numerical model that is capable of accurately reproducing the transverse shear stiffness of upright frames using shell elements has been developed [29, 30].

Contemporary to the investigation of the structural response of rack components, the assessment of the seismic response of the whole structure has been explored because of collapses in recent earthquakes [31, 32]. The seismic response has been investigated [33, 34], and shake table tests of rack frames have been performed [35, 36]. The seismic response in the cross-aisle direction has also been studied [37] through dynamic analyses. Anti-seismic devices for steel storage structures have been investigated in recent years [38]. Furthermore, base isolation systems to bring benefits in terms of a reduction of structural damage have been proposed in a study [39]. The improvement in the seismic response by the use of K-shaped bracing as a lateral load-resisting system has been proposed [40]. The adoption of perforated diagonal braces in designing earthquake-resistant steel racks, according to the capacity design, has been proposed [41], along with the dynamic response of automated rack-supported warehouses [42], where a reduced-order modelling approach easily adopted in common practice is developed. The hysteretic energy dissipation of connections formed by columns with a rectangular hollow section, usually adopted in rack warehouses, was also explored [43]. A study on the behavior and design of drive-in racks has been performed [44], where a new bracing mechanism is developed to improve the seismic behavior of steel storage racks using friction-damped seismic fuses. The impact of different combinations of structural parameters has been studied by performing sensitivity analyses using the Monte Carlo simulation [45]. It has been determined that the parameters that have the greatest influence on the response are the number of storage levels and the height between them. A study on the seismic cross-aisle behavior of drive-in steel storage racks obtained from full-scale shake table tests has been performed [46]. Two framing systems have been considered: a fully braced frame with diagonal braces extending from top to bottom and a portal frame. The natural frequency, damping and advantages/disadvantages of both systems have been presented. A 3D model of a conventional pallet racking system has been developed [47]. The model has been adopted to check a simplified equation for the evaluation of the fundamental period of storage racks in the down-aisle direction. Furthermore, in a study, non-linear time history analyses have been performed to estimate the equivalent viscous damping [48].

Considering the seismic behavior of steel rack systems that has been widely investigated, there is a lack of studies on the dynamic response of racking systems due to accidental

impacts, highlighting the need for further research. The international racking design code recommends checking the response of the system again in terms of accidental impacts between the floor and the first beam elevation [49]. EN 15512 [50] recommends an accidental impact force of 1.25 kN in the down-aisle direction and 2.5 kN in the cross-aisle direction at 0.4 m in height for manually operated forklift trucks. Australian Standard AS 4084 [51] uses an impact force applied at the most unfavourable location equal to the maximum of the unit load/15 and 0.5 kN in both cross-aisle and down-aisle directions. However, the impact forces are arbitrary and have no scientific justification [52]. The consequences of an accidental forklift truck impact, producing the loss of the bottom of an upright, are investigated in a study [53]. It focuses on the nature of the collapse, assuming the impact strong enough to remove the lowest section of one of the rack uprights.

In a study [54], the progressive collapse is investigated by adopting a 3D analysis on complete storage racks. Moreover, the dynamic behaviour of selective racks during and after the impact is numerically investigated [55]. The impact force at the bottom of a leg is calculated using the energy of the forklift truck during impact but is not based on actual testing. The explicit forklift impact has also been analyzed [56] by studying several configurations, highlighting the systems to be susceptible to global failure, especially if the rigidity of connections is low.

Failure of the rack can be produced by several nondestructive accidental impacts and result in significant property loss and economic disruption. The effect and propagation of damage among adjacent upright frames after an accidental impact remains under study, and it is a focus of the present paper, where a proposal in monitoring devices for the assessment of the structural behavior of existing racks is suggested.

The paper is organized as follows: the initial part of the paper describes the investigated selective pallet rack, its components, and its properties. Test setup, the instrumentation and the loading protocol are presented in the second part. The test program includes hammer tests and the simulation of a forklift truck impact during pallet handling. The paper concludes by presenting recorded experimental data related to the acceleration and the strain time history and provides useful information to practitioners to optimize the number and position of monitoring devices for the assessment of existing racks.

2. MATERIALS AND METHODS

2.1. Properties of Components

Experiments on a full-scale selective rack with three bays and three levels of pallets are performed.

The rack analyzed is fully braced in the cross-aisle direction with diagonal braces extending from top to bottom (Fig. 1a). Diagonals are designed not to buckle under seismic actions. In the down-aisle direction, the rack behaves like a moment-resisting frame (Fig. 1b). The investigated system is a medium-rise double-entry pallet rack. Storage levels have a

constant inter-story height of 2000 mm and a bay length of 2700 mm. Pallets are placed on beams. Pallets of 800kg each at different bays and levels are placed. The layout adopted in experimental tests with the distribution of the vertical live loads is shown in Fig. (1b).

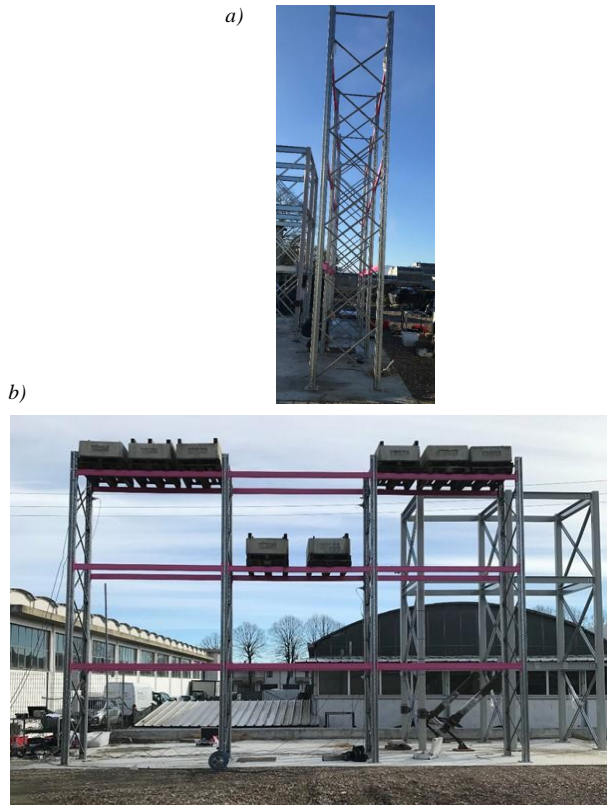


Fig. (1). (a) Cross-aisle view. (b) Down-aisle view with the identification of the distribution of vertical live load.

The rack is made of thin-walled cold-formed steel open sections with different profiles for the different components. Uprights are produced from S350 steel grade (nominal yield stress of 350 MPa). Uprights have a perforated open section, whose ultimate capacity has been investigated through experimental tests under compression and bending [57]. The diagonal brace steel grade is S250 (nominal yield stress of 250 MPa). Diagonal braces have a 25mm x 25mm x 8mm lipped channel section, which is 1.5mm thick. Diagonals are assembled flange-to-flange, and one M8 bolt class 8.8 [58] is adopted to join the diagonals to the upright. The non-linear response of diagonal braces has been investigated [59], where testing procedures, instrumentations and detailed experimental results can be found.

In the down-aisle direction, beam-to-column connections are formed by a beam with a hollow tubular cross section (height/width/thickness = 120/40/2 mm). The beam end section is welded to a connector with 5 tabs. The moment-rotation curve of rack connection is determined in previous tests [60] using the procedure described in EN 15512 [61].

2.2. Loading Protocol

Hammer tests and impact tests simulating the operating

forklift truck impact are carried out to evaluate the propagation of acceleration between adjacent upright frames and the magnitude of strains recorded on diagonal braces placed at the bottom of the upright frames.

In Table 1, the live load at different levels and the loading protocol for each test are listed.

Table 1. Live load at each level and loading protocol adopted for each test.

Test	Total Load	Total Load	Total Load	Loading protocol
	[kN] Level 1	[kN] Level 2	[kN] Level 3	
HT1 _{base}	0	16	48	Hammer test – impulse at 0.4m – cross-aisle direction
HT2 _{base}	0	16	48	Hammer test – impulse at 0.4m – cross-aisle direction
HT1 _{1^olevel}	0	16	48	Hammer test – impulse at first level – cross-aisle direction
HT2 _{1^olevel}	0	16	48	Hammer test – impulse at first level – cross-aisle direction
FI	0	16	48	Forklift truck impact at the first level- cross-aisle direction

HTN_j, identifies the Hammer Test number N in which the impulse is applied at the j position, where j=base means that the impact is applied at 0.4m from the ground according to the UNI EN 15512 and j=1^olevel means that the hit is applied at the first load level.

In the FI test, the Forklift truck impact during pallet handling is simulated (Fig. 2a).



Fig. (2). (a) Forklift tuck impact (b) Strain gauges placed on diagonal braces.

Different types of instrumentations are used for data recording. Strain gauges are adopted for measuring the axial strains developing in the diagonal braces (Fig. 2b). Accelerometers are used to measure accelerations in the horizontal direction along the cross-aisle direction of the rack. In Fig. (3), the position of monitoring devices is highlighted, a_i identifies the position of the i-th accelerometer, and the arrow indicates the direction of the measurement, e_j identifies the position of the j-th strain gauge placed on a diagonal. The letter “X” identifies the point where the impact is applied, and the related number identifies the sequence of the impulses.

3. RESULTS AND DISCUSSION

The load (P), acceleration (a,) and strain (e,) time history

recorded during test HT1_{base} and HT2_{base} are shown in Figs. (4 and 5). The maximum value of the recorded load and related maximum acceleration and strain are listed in Tables 2 and 3.

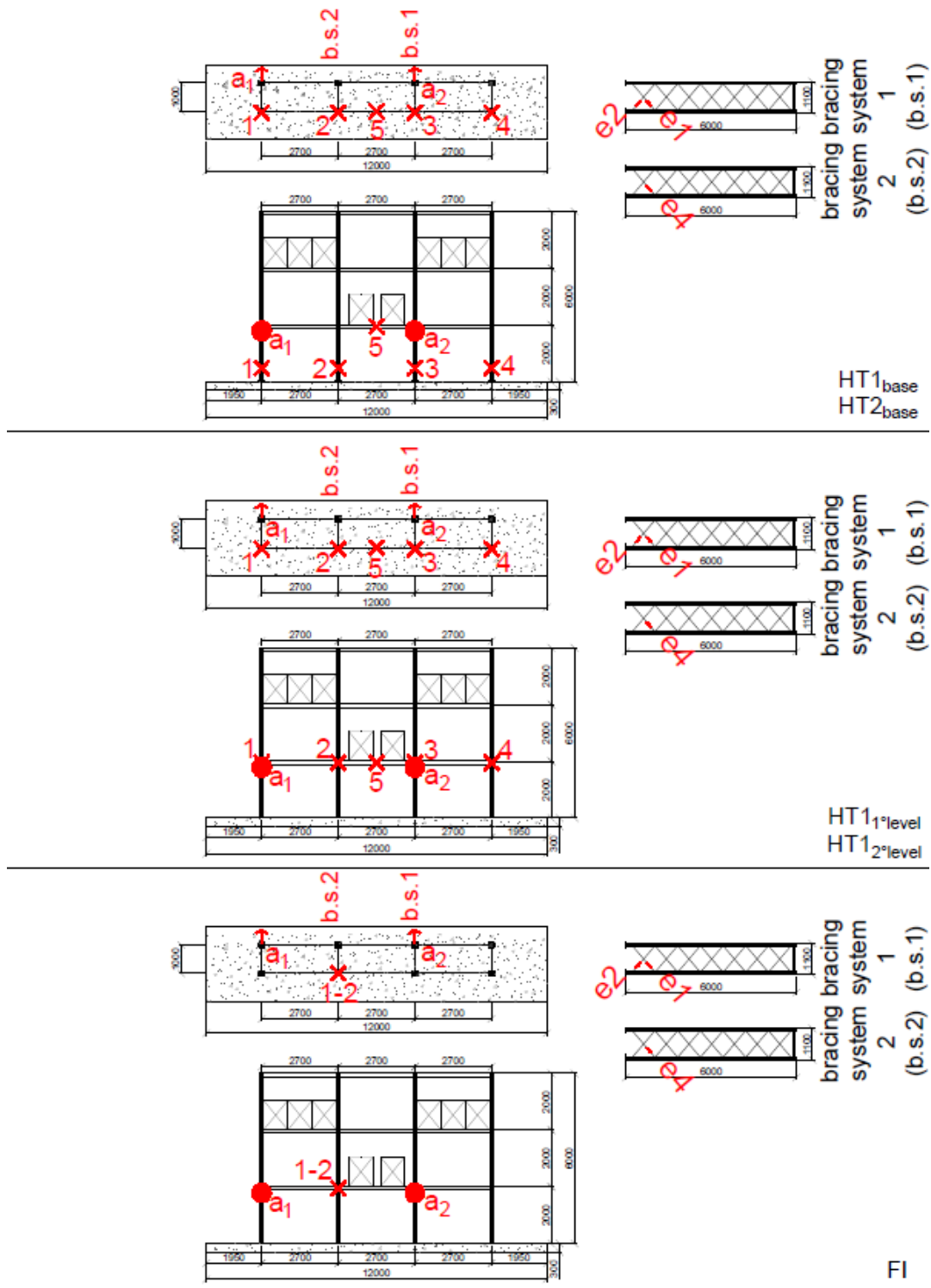


Fig. (3). Position of monitoring devices: a_i identifies the position of the i-th accelerometer, e_j identifies the position of the j-th strain gauge placed on the diagonal brace, “X” identifies the point where the impact is applied, and numbers identify the sequence of the impulses.

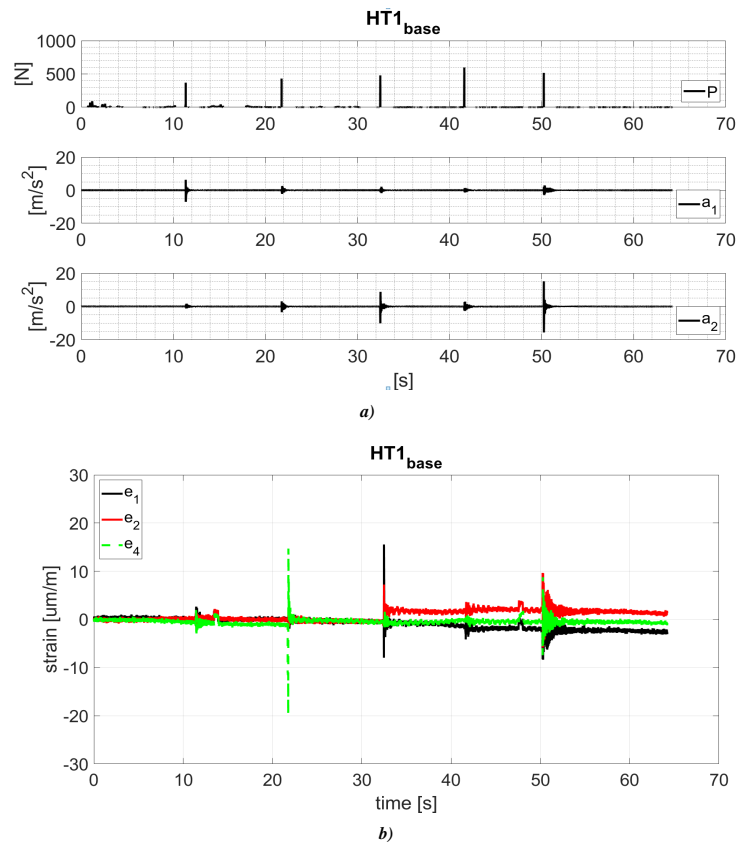


Fig. (4). Test HT1_{base}. (a) Load time history and acceleration time history. (b) Strain time history.

Table 2. Maximum value of recorded load and related maximum acceleration and strain.

Accelerometer (HT1 _{base})	Impulse [N]				
	1°	2°	3°	4°	5°
	369	431	479	597	516
	a[m/s ²] - acceleration				
a ₁	7	2,5	2,1	1,3	2,9
a ₂	1,6	3,5	10,2	2,9	15,6
a ₁ /a ₂	4,4	0,7	0,2	0,4	0,2
a ₂ /a ₁	0,2	1,4	4,9	2,2	5,4
Strain gauge (HT1 _{base})	Impulse [N]				
	1°	2°	3°	4°	5°
	369	431	479	597	516
	e - strain				
e ₁	2,4	1,9	15	4,2	8,3
e ₂	1	1,6	7,2	3,4	9,6
e ₄	2	19	1,6	1,6	8,7
e ₁ /e ₂	2,4	1,2	2,1	1,2	0,9
e ₂ /e ₁	0,4	0,8	0,5	0,8	1,2

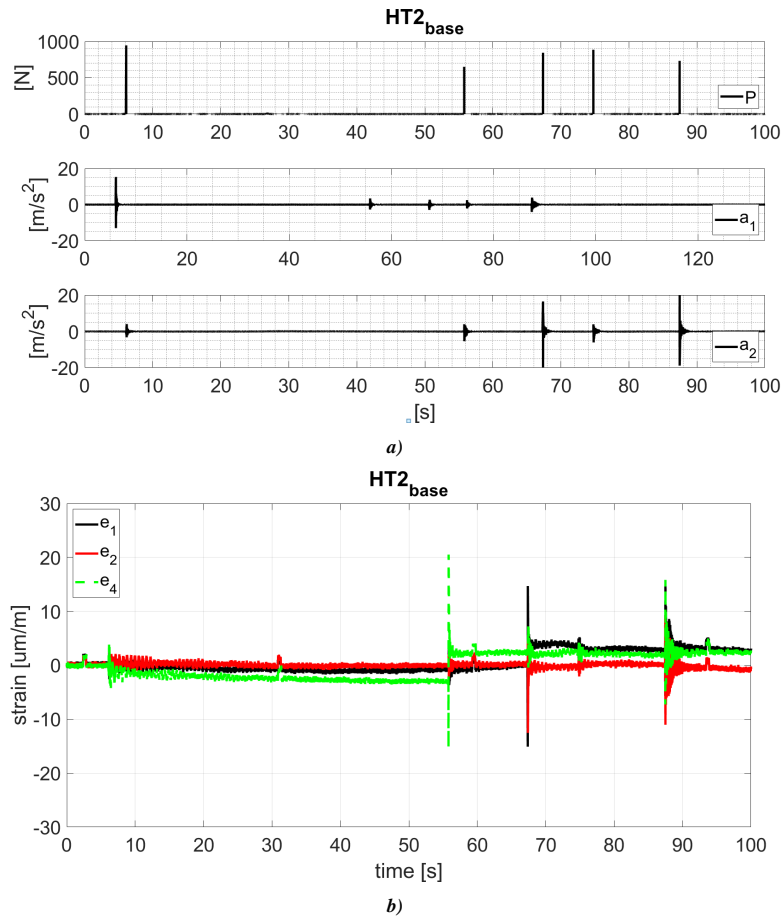


Fig. (5). Test HT2_base. (a) Load time history and acceleration time history. (b) Strain time history.

Table 3. Maximum value of recorded load and related maximum acceleration and strain.

Accelerometer (HT2_base)	Impulse [N]				
	1°	2°	3°	4°	5°
	946	651	886	844	732
	a[m/s ²] - acceleration				
a_1	15,3	3,4	3,0	2,5	3,9
a_2	4,0	3,9	20,9	6,1	18,9
a_1/a_2	3,8	0,9	0,1	0,4	0,2
a_2/a_1	0,3	1,1	7,0	2,4	4,8
Strain gauge (HT2_base)	Impulse [N]				
	1°	2°	3°	4°	5°
	e - strain				
e_1	2,5	2,7	15,1	1,7	15,6
e_2	2,1	2,2	12,5	2,1	11
e_4	3,1	20,5	7,3	0,5	15,8
e_1/e_2	1,2	1,2	1,2	0,8	1,4
e_2/e_1	0,8	0,8	0,8	1,2	0,7

Experimental results highlight the reduction in the acceleration between adjacent upright frames. For an impact slight lesser than 1000N at 0.4m from the ground (Fig. 5), the maximum recorded acceleration on the impacted upright is

about 20m/s² and about 3.5 m/s² at the upright placed two bays closed (the value of acceleration a_1 and a_2 for the impulse number 1 and 3 in Table 3). The acceleration on the adjacent upright is about 4 m/s² (the value of acceleration a_1 and a_2 for

impulse number 2 in Table 3).

Experimental results highlight the maximum strain on diagonal braces placed at the bottom of adjacent upright frames in the hammer test. For an impact slight lesser than 1000N at 0.4m from the ground, the strain on diagonals connected to the impacted upright is about 15µm/m and 2.5 µm/m at the diagonal brace placed on the adjacent upright frame (the value of strain e_1 , e_2 , and e_4 for the impulse number 2 and 3 in Table

3). In both cases, the measured strains are lesser than the diagonal yielding strain 1190µm/m, highlighting the braces to remain in the elastic field.

The load (P), acceleration (a_i) and strain (e_i) time history recorded in test HT1_{1°floor} and HT2_{1°floor} are shown in Figs. (6 and 7). The maximum value of the recorded load and related maximum acceleration and strain are listed in Tables 4 and 5.

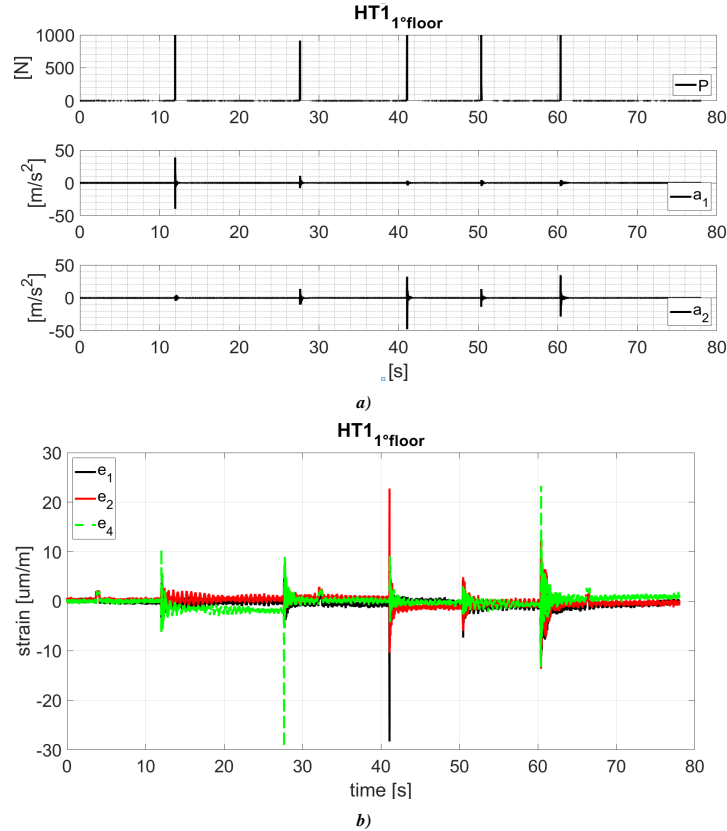


Fig. (6). Test HT1_{1°floor}. (a) Load time history and acceleration time history. (b) Strain time history.

Table 4. Maximum value of recorded load and related maximum acceleration and strain.

Accelerometer (HT1 _{1°floor})	Impulse [N]				
	1°	2°	3°	4°	5°
		1158	915	995	1171
a[m/s ²] - acceleration					
a_1	38,7	10,8	3,5	4,5	4,5
a_2	4,5	13,7	32,2	13,5	34,5
a_1/a_2	8,6	0,8	0,1	0,3	0,1
a_2/a_1	0,1	1,3	9,2	3,0	7,7
Strain gauge (HT1 _{1°floor})	Impulse [N]				
	1°	2°	3°	4°	5°
	1158	915	995	1171	1048
e - strain					
e_1	5,1	6,4	28,3	7,3	13,7
e_2	2,4	3,8	22,8	6	13,6
e_4	10,1	29,4	3,8	2,5	17,8

(Table 4) contd....

e_1/e_2	2,1	1,7	1,2	1,2	1,0
e_2/e_1	0,5	0,6	0,8	0,8	1,0

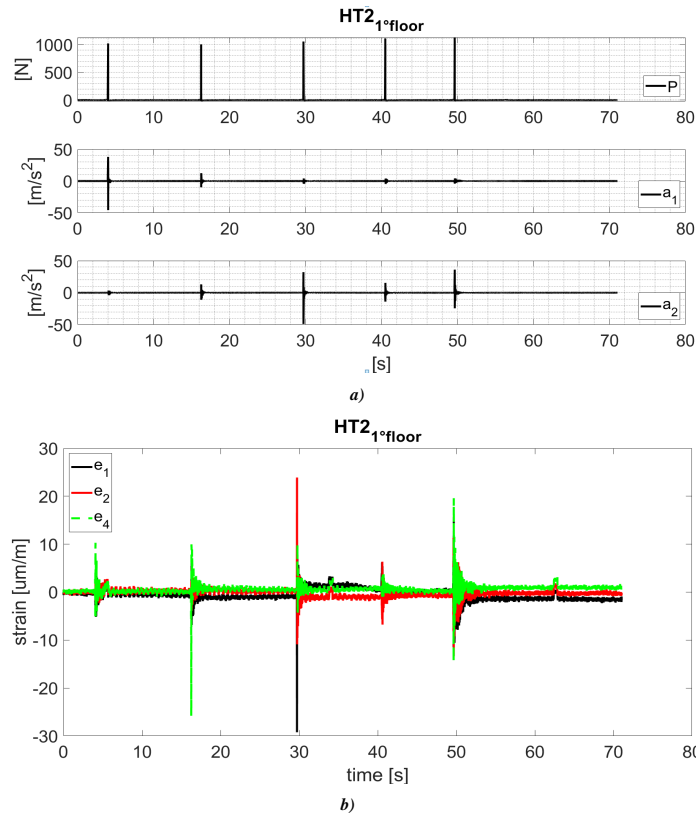


Fig. (7). Test HT2_{1st floor}. (a) Load time history and acceleration time history. (b) Strain time history.

Table 5. Maximum value of recorded load and related maximum acceleration and strain.

Accelerometer (HT2 _{1st floor})	Impulse [N]				
	1°	2°	3°	4°	5°
	1018	1002	1053	1110	1127
	a[m/s ²] - acceleration				
a_1	38	12,4	4,1	4	4,2
a_2	3,3	13,1	32,1	15,4	36,1
a_1/a_2	11,5	0,9	0,1	0,3	0,1
a_2/a_1	0,1	1,1	7,8	3,9	8,6
Strain gauge (HT2 _{1st floor})	Impulse [N]				
	1°	2°	3°	4°	5°
	1018	1002	1053	1110	1127
	e - strain				
e_1	5,2	6,8	29,2	5,4	11,4
e_2	2,8	5,2	24	6,3	11,3
e_4	10,3	25,8	10	4,1	19,6
e_1/e_2	1,9	1,3	1,2	0,9	1,0
e_2/e_1	0,5	0,8	0,8	1,2	1,0

Experimental results highlight the reduction in the acceleration between adjacent upright frames. For an impact of about 1000N at the first load level (Figs. 7 and 8), the

maximum recorded acceleration on the impacted upright is about 35m/s² and it is about 4 m/s² (ratio 0.1) at the upright placed two bays closed (the value of acceleration a_1 and a_2 for

the impulse number 1 and 3 in Tables 4 and 5. The acceleration on the adjacent upright is about 10 m/s^2 (the value of acceleration a_1 and a_2 for impulse number 2 in Tables 4 and 5).

Regarding the value of the recorded maximum strain at the diagonal braces placed at the bottom of the upright frame, it can be observed that for an impact of about 1000N at the first load level, the strain on the impacted upright is about $30 \mu\text{m/m}$ and $5 \mu\text{m/m}$ at the diagonal placed on the adjacent upright frame (the value of strain e_1 , e_2 and e_4 for the impulse number 2 and 3 in Tables 4 and 5). In both cases, the measured strains are less than the yielding strain, confirming the diagonals remain in an elastic field.

Acceleration (a_i) and strain (e_i) time history recorded during test FI are shown in Fig. (8), and the maximum values at

different impacts are listed in Table 6.

The maximum acceleration due to the forklift truck impact during the pallet handling is about 2.4 m/s^2 , a value smaller than those obtained in the hammer tests. A similar value of a_1 and a_2 highlights that the upright frames adjacent to the impacted one are affected by about the same acceleration and actions (Table 6). The maximum recorded strain is greater than that measured during hammer tests ($305.6 \mu\text{m/m}$, Table 6). The difference between the maximum strains measured by e_1 and e_4 highlights a reduced capacity of the racking system in the redistribution of forces between adjacent upright frames. As expected, the diagonals of the impacted upright frame are the critical members. A similar value of e_1 and e_2 ($e_1/e_2 \approx 1$), obtained in all tests, highlights that compressed and tensile diagonals work in parallel.

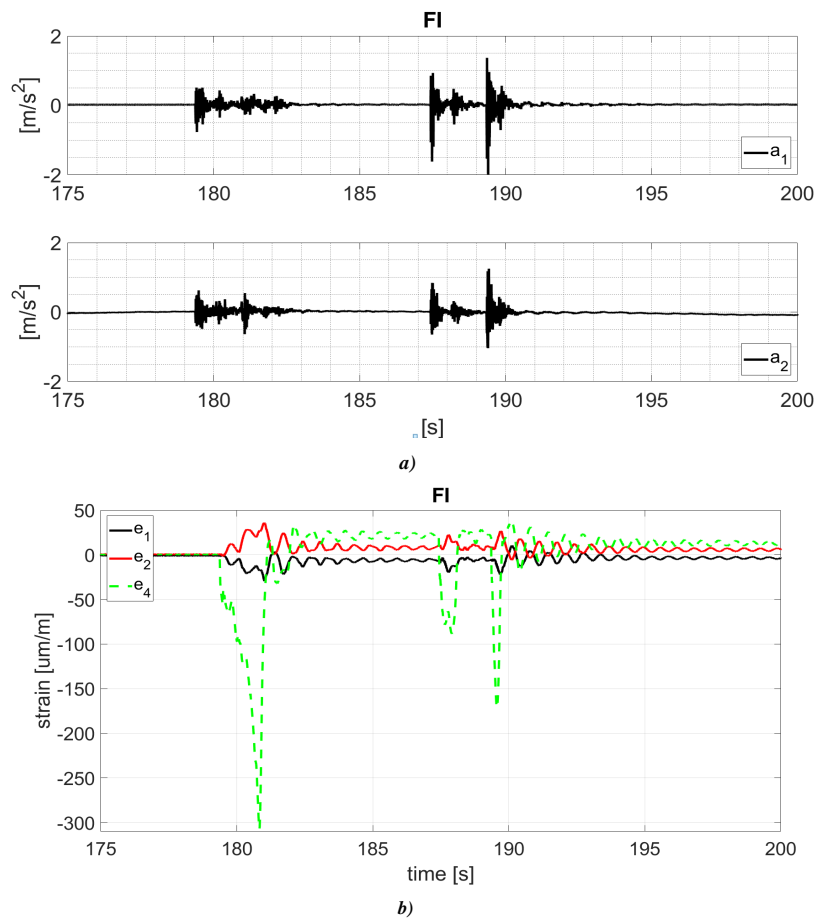


Fig. (8). Test FI. (a) Acceleration time history. (b) Strain time history.

Table 6. Maximum value of recorded acceleration and strain in test FI.

Accelerometer (FI)	$a[\text{m/s}^2]$ - acceleration		
a_1	0,8	1,6	2,4
a_2	0,6	0,8	1,5
Strain gauge (FI)	e - strain		

e_1	28,8	19,9	23,4
e_2	35,7	22,1	26,3
e_4	305,6	86,4	165,9

CONCLUSION

Experiments on a full-size selective rack subjected to the impact of a forklift truck during the pallet handling and hammer tests were performed. The propagation of the acceleration among adjacent bracing frames was investigated with the magnitude of the strains in diagonal braces of upright frames.

In hammer tests, in which about the same load suggested by standard codes (EN 15512 and Australian Standard AS 4084) for manually operated forklift trucks has been reproduced, recorded accelerations and strains were different from those produced by the simulated impact of a forklift truck. A load of about 1 kN applied at 0.4 m from the ground or at the first load level led to a maximum acceleration of 20 m/s² and 35 m/s², respectively, recorded by an accelerometer placed at the first load level on the impacted upright frame. The maximum strain was 30 µm/m, recorded on the bottom diagonal at the impacted upright frame. The impact of a forklift truck during the pallet handling effectively produced an acceleration of 2.4 m/s² and a strain of 305.6 µm/m.

Moreover, experimental results highlighted that an accelerometer every two spans was enough to recognize whether the monitored racking system was accidentally hit. Nevertheless, recorded accelerations could be used to estimate the stress pattern on structural members only by adopting a finite element numerical model developed for this purpose and calibrated on experimental results. In common practice, accelerometers are suggested to warn when the rack is stricken, while strain gauges are proposed for a reliable estimation of stresses on non-impacted structural members. The assessment of the damage to the impacted members requires future investigations. Finally, results showed that for the investigated racking system, the number of strain gauges could be reduced, considering that forklift truck impact and induced stress on structural members can be detected by applying only a strain gauge at one bottom diagonal of the upright frame every two spans.

LIST OF ABBREVIATIONS AND SYMBOLS

CFS	=	Cold-Formed-Steel
FE	=	Finite Element
P	=	Load
ai	=	Acceleration
ei	=	Strain

CONSENT FOR PUBLICATION

Not applicable.

AVAILABILITY OF DATA AND MATERIALS

The data that support the findings of this study are available within the article.

FUNDING

None.

CONFLICT OF INTEREST

Dr. Gusella is the associate editorial board member of The Open Civil Engineering Journal.

ACKNOWLEDGEMENTS

Declared none.

REFERENCES

- [1] D. Tsarpalis, D. Vamvatsikos, F. Delladonna, M. Fabini, J. Hermanek, P.D. Margotan, S. Sesana, E. Vantusso, and I. Vayas, "Macro-characteristics and taxonomy of steel racking systems for seismic vulnerability assessment", *Bull. Earthquake Eng.*, vol. 20, no. 5, pp. 2695-2718, 2022.
[http://dx.doi.org/10.1007/s10518-022-01326-x]
- [2] F. Gusella, M. Orlando, and K. Thiele, "Evaluation of rack connection mechanical properties by means of the Component Method", *J. Construct. Steel Res.*, vol. 149, pp. 207-224, 2018.
[http://dx.doi.org/10.1016/j.jcsr.2018.07.021]
- [3] X. Zhao, T. Wang, Y. Chen, and K.S. Sivakumaran, "Flexural behavior of steel storage rack beam-to-upright connections", *J. Construct. Steel Res.*, vol. 99, pp. 161-175, 2014.
[http://dx.doi.org/10.1016/j.jcsr.2014.04.007]
- [4] C. Aguirre, "Seismic behavior of rack structures", *J. Construct. Steel Res.*, vol. 61, no. 5, pp. 607-624, 2005.
[http://dx.doi.org/10.1016/j.jcsr.2004.10.001]
- [5] S.N.R. Shah, N.H. Ramli Sulong, R. Khan, M.Z. Jumaat, and M. Shariati, "Behavior of industrial steel rack connections", *Mech. Syst. Signal Process.*, vol. 70-71, pp. 725-740, 2016.
[http://dx.doi.org/10.1016/j.ymsp.2015.08.026]
- [6] L. Dai, X. Zhao, and K.J.R. Rasmussen, "Flexural behaviour of steel storage rack beam-to-upright bolted connections", *Thin-walled Struct.*, vol. 124, pp. 202-217, 2018.
[http://dx.doi.org/10.1016/j.tws.2017.12.010]
- [7] B. El Kadi, C. Coşgun, A. Mangir, and G. Kiymaz, "Strength upgrading of steel storage rack frames in the down-aisle direction", *Steel Compos. Struct.*, vol. 23, no. 2, pp. 143-152, 2017.
[http://dx.doi.org/10.12989/scs.2017.23.2.143]
- [8] S.N.R. Shah, N.H.R. Sulong, M.Z. Jumaat, and M. Shariati, "State-of-the-art review on the design and performance of steel pallet rack connections", *Eng. Fail. Anal.*, vol. 66, pp. 240-258, 2016.
[http://dx.doi.org/10.1016/j.engfailanal.2016.04.017]
- [9] S.N.R. Shah, N.H. Ramli Sulong, M. Shariati, R. Khan, and M.Z. Jumaat, "Behavior of steel pallet rack beam-to-column connections at elevated temperatures", *Thin-walled Struct.*, vol. 106, pp. 471-483, 2016.
[http://dx.doi.org/10.1016/j.tws.2016.05.021]
- [10] M. Shariati, M.M. Tahir, T.C. Wee, S.N.R. Shah, A. Jalali, M.M. Abdullahi, and M. Khorami, "Experimental investigations on monotonic and cyclic behavior of steel pallet rack connections", *Eng. Fail. Anal.*, vol. 85, pp. 149-166, 2018.
[http://dx.doi.org/10.1016/j.engfailanal.2017.08.014]
- [11] X. Zhao, L. Dai, T. Wang, K.S. Sivakumaran, and Y. Chen, "A theoretical model for the rotational stiffness of storage rack beam-to-upright connections", *J. Construct. Steel Res.*, vol. 133, pp. 269-281, 2017.
[http://dx.doi.org/10.1016/j.jcsr.2017.02.014]
- [12] F. Gusella, S.R. Arwade, M. Orlando, and K.D. Peterman, "Influence of mechanical and geometric uncertainty on rack connection structural response", *J. Construct. Steel Res.*, vol. 153, pp. 343-355, 2019.
[http://dx.doi.org/10.1016/j.jcsr.2018.10.021]
- [13] Z-J. Lyu, M. Wu, Y.X. Huang, Y.M. Song, and X. Cui, "Assessment of the dynamic behavior of beam-to-column connections in steel pallet racks under cyclic load: Numerical investigation", *Adv. Civil Engin.*,

- vol. 2018, pp. 1-22, 2018.
[http://dx.doi.org/10.1155/2018/9243216]
- [14] R. Vujanac, N. Miloradović, S. Vulović, and A. Pavlović, "A comprehensive study into the boltless connections of racking systems", *Metals*, vol. 10, no. 2, p. 276, 2020.
[http://dx.doi.org/10.3390/met10020276]
- [15] H. Yang, H. Wang, H. Qian, X. Jin, D. Chen, Y. He, Q. Li, and F. Fan, "Mechanical performance of pre-engineered closed section beam-column connections in CFS frames: Experimental investigation", *Structures*, vol. 39, pp. 164-174, 2022.
[http://dx.doi.org/10.1016/j.istruc.2022.03.032]
- [16] C. Ren, Y. He, Z. Wu, W. He, and L. Dai, "Experiments and numerical predictions of cold-formed steel members with web perforations under combined compression and minor axis bending", *Eng. Struct.*, vol. 256, no. 1, p. 114022, 2022.
[http://dx.doi.org/10.1016/j.engstruct.2022.114022]
- [17] H. Mousavi, M. Azhari, M.M. Saadatpour, and S.S. Foroushani, "Application of improved element-free Galerkin combining with finite strip method for buckling analysis of channel-section beams with openings", *Engineering with Computers.*, vol. 38, no. 1, pp. 739-755.
- [18] K. Roy, H.H. Lau, T.C.H. Ting, B. Chen, and J.B.P. Lim, "Flexural capacity of gapped built-up cold-formed steel channel sections including web stiffeners", *J. Construct. Steel Res.*, vol. 172, p. 106154, 2020.
[http://dx.doi.org/10.1016/j.jcsr.2020.106154]
- [19] F. Dumbrava, and C. Camelia, *Experimental study on the stiffness of steel beam-to-upright connections for storage racking systems materials*, vol. 13, no. 13, p. 2949, 2020.
- [20] Đ. Jovanović, D. Žarković, V. Vukobratović, and Z. Brujić, "Hysteresis model for beam-to-column connections of steel storage racks", *Thin-walled Struct.*, vol. 142, no. 9, pp. 189-204, 2019.
[http://dx.doi.org/10.1016/j.tws.2019.04.056]
- [21] N. Chan, A. Hashemi, P. Zarnani, and P. Quenneville, "Damping-ductility relationships for flag-shaped hysteresis", *J. Struct. Engin.*, vol. 147, no. 71, 2021.
- [22] O. Bové, M. Ferrer, F. López-Almansa, and F. Roure, "Numerical investigation on a seismic testing campaign on adjustable pallet rack speed-lock connections", *Eng. Struct.*, vol. 252, no. 113653, p. 113653, 2022.
[http://dx.doi.org/10.1016/j.engstruct.2021.113653]
- [23] O. Bové, F. López-Almansa, M. Ferrer, and F. Roure, "Ductility improvement of adjustable pallet rack speed-lock connections: Experimental study", *J. Construct. Steel Res.*, vol. 188, no. 107015, p. 107015, 2022.
[http://dx.doi.org/10.1016/j.jcsr.2021.107015]
- [24] B.P. Gilbert, K.J.R. Rasmussen, N. Baldassino, T. Cudini, and L. Rovere, "Determining the transverse shear stiffness of steel storage rack upright frames", *J. Construct. Steel Res.*, vol. 78, pp. 107-116, 2012.
[http://dx.doi.org/10.1016/j.jcsr.2012.06.012]
- [25] S.R. Sajja, R.G. Beale, and M.H.R. Godley, "Shear stiffness of pallet rack upright frames", *J. Construct. Steel Res.*, vol. 64, no. 7-8, pp. 867-874, 2008.
[http://dx.doi.org/10.1016/j.jcsr.2008.01.025]
- [26] F. Roure, T. Peköz, J. Bonada, M.R. Somalo, M.M. Pastor, and M. Casafont, "Stiffness of welded brace to lipped channel column joints: an experimental and numerical approach", In: *International Colloquium on Stability and Ductility of Steel Structures*, Elsevier, 2016.
- [27] F. Roure, T. Peköz, M.R. Somalo, J. Bonada, M.M. Pastor, and A. Segura, "Cross-aisle stiffness analysis of industrial welded cold-formed steel rack upright frames", *Thin-walled Struct.*, vol. 141, no. 8, pp. 332-344, 2019.
[http://dx.doi.org/10.1016/j.tws.2019.04.041]
- [28] H. Far, A. Saleh, and A. Firouzianhaji, "A simplified method to determine shear stiffness of thin walled cold formed steel storage rack frames", *J. Construct. Steel Res.*, vol. 138, pp. 799-805, 2017.
[http://dx.doi.org/10.1016/j.jcsr.2017.09.012]
- [29] N. Talebian, B.P. Gilbert, and H. Karampour, "Transverse shear stiffness of bolted cold-formed steel storage rack upright frames with channel bracing members", *International Specialty Conference on Cold-Formed Steel Structures-Recent Research and Developments in Cold-Formed Steel Design and Construction*, 2018pp. 455-469 United States
- [30] N. Talebian, B.P. Gilbert, N. Baldassino, and H. Karampour, "Factors contributing to the transverse shear stiffness of bolted cold-formed steel storage rack upright frames with channel bracing members", *Thin-walled Struct.*, vol. 136, pp. 50-63, 2019.
[http://dx.doi.org/10.1016/j.tws.2018.12.001]
- [31] C. Clifton, M. Bruneau, G. MacRae, R. Leon, and A. Fussell, "Steel structures damage from the Christchurch earthquake series of 2010 and 2011", *Bull. New Zealand Soc. Earthquake Engin.*, vol. 44, no. 4, pp. 297-318, 2011.
[http://dx.doi.org/10.5459/bnzsee.44.4.297-318]
- [32] D.A. Bourmas, P. Negro, and F.F. Taucer, "Performance of industrial buildings during the Emilia earthquakes in Northern Italy and recommendations for their strengthening", *Bull. Earthquake Eng.*, vol. 12, no. 5, pp. 2383-2404, 2014.
[http://dx.doi.org/10.1007/s10518-013-9466-z]
- [33] G. Gabbianelli, F. Cavalieri, and R. Nascimbene, "Seismic vulnerability assessment of steel storage pallet racks", *Ingegneria Sismica*, vol. 37, no. 2, pp. 18-40, 2020.
- [34] E. Jacobsen, and R. Tremblay, "Shake-table testing and numerical modelling of inelastic seismic response of semi-rigid cold-formed rack moment frames", *Thin-walled Struct.*, vol. 119, no. 10, pp. 190-210, 2017.
[http://dx.doi.org/10.1016/j.tws.2017.05.024]
- [35] A. Filiatrault, P.S. Higgins, A. Wanitkorkul, and J. Courtwright, "EXperimental sti?ness of pallet-type steel storage rack tier drop connectors", *Pract. Period. Struct. Des. Constr.*, vol. 12, no. 4, pp. 210-215, 2007.
[http://dx.doi.org/10.1061/(ASCE)1084-0680(2007)12:4(210)]
- [36] A. Filiatrault, P.S. Higgins, A. Wanitkorkul, J.A. Courtwright, and R. Michael, "EXperimental seismic response of base isolated pallet-type steel storage racks", *Earthq. Spectra*, vol. 24, no. 3, pp. 617-639, 2008.
[http://dx.doi.org/10.1193/1.2942375]
- [37] R. James, L.H. Maguire, G. Teh, Z.H. Charles Clifton, and B.P. Lim, "Cross-aisle seismic performance of selective storage racks", *J. Construct. Steel Res.*, vol. 168, no. 5, p. 105999, 2020.
- [38] M. Simoncelli, B. Tagliaferro, and R. Montuori, "Recent development on the seismic devices for steel storage structures", *Thin-walled Struct.*, vol. 155, p. 106827, 2020.
[http://dx.doi.org/10.1016/j.tws.2020.106827]
- [39] B. Tagliaferro, R. Montuori, and M.G. Castellano, "Shake table testing and numerical modelling of a steel pallet racking structure with a seismic isolation system", *Thin-walled Struct.*, vol. 164, no. 7, p. 107924, 2021.
[http://dx.doi.org/10.1016/j.tws.2021.107924]
- [40] H. Tajmir Riahi, M. Zeynalian, A. Rabei, and E. Ferdosi, "Seismic collapse assessment of K-shaped bracings in cold-formed steel frames", *Structures*, vol. 25, no. 6, pp. 256-267, 2020.
[http://dx.doi.org/10.1016/j.istruc.2020.03.013]
- [41] F. Gusella, G. Lavacchini, M. Orlando, and P. Spinelli, "Axial response of cold-formed steel bracing members with holes", *J. Construct. Steel Res.*, vol. 161, pp. 70-85, 2019.
[http://dx.doi.org/10.1016/j.jcsr.2019.06.015]
- [42] D. Tsarpalis, D. Vamvatsikos, I. Vayas, and F. Delladonna, "Simplified Modeling for the seismic performance assessment of automated rack-supported warehouses", *J. Struct. Eng.*, vol. 147, no. 11, p. 04021189, 2021.
[http://dx.doi.org/10.1061/(ASCE)ST.1943-541X.0003153]
- [43] A. Miguel, S. López, C. López-Colina, Y.C. Wang, M. Lozano, I. García, and F.L. Gayarre, "An experimental study of I beam-RHS column demountable joints with welded studs", *J. Construct. Steel Res.*, vol. 182, no. 7, p. 106651, 2021.
- [44] S.A. Mahmoud, S. Kim, and J.R. Rasmussen, "Development of friction-damped seismic fuses for steel storage racks", *J. Construct. Steel Res.*, vol. 192, no. 5, p. 107216, 2022.
- [45] O. Álvarez, E. Muñoz, N. Maureira-Carsalade, and Á. Roco-Videla, "A sensitivity analysis approach for assessing the effect of design parameters in reducing seismic demand of base-isolated storage racks", *Appl. Sci.*, vol. 11, no. 23, p. 11553, 2021.
[http://dx.doi.org/10.3390/app112311553]
- [46] S.A. Mahmoud, S. Kim, and J.R. Rasmussen, "Seismic tests of drive-in steel storage racks in cross-aisle direction", *J. Construct. Steel Res.*, vol. 162, no. 11, p. 105701, 2019.
- [47] K.M. Bajoria, K.K. Sangle, and R.S. Talicotti, "Modal analysis of cold-formed pallet rack structures with semi-rigid connections", *J. Construct. Steel Res.*, vol. 66, no. 3, pp. 428-441, 2010.
[http://dx.doi.org/10.1016/j.jcsr.2009.10.005]
- [48] M. Roberto, G. Gabbianelli, D. Perrone, and A. Filiatrault, "Calibrated equivalent viscous damping for direct displacement based seismic design of pallet-type steel storage racks", *J. Earthquake Eng.*, p. 26, 2021.

- [49] RMI, *Specification for the design, testing and utilization of industrial steel storage racks.*, Rack Manufacturers Institute: Charlotte, USA, 2008. Available from: <https://scholarsmine.mst.edu/cgi/viewcontent.cgi?article=1001&context=ecfss-rmi>
- [50] EN 15512., "Steel static storage systems—adjustable pallet racking systems— principles for structural design", Available from: <https://standards.iteh.ai/catalog/standards/cen/3f19b535-1196-4698-b785-95227601fcbd/en-15512-2020>
- [51] *AS 4084. Steel storage racking.*, Standards Australia: Homebush (Australia), 1993. Available from: https://www.lyracking.com/?gclid=CjwKCAjw-rOaBhA9EiwAukLV4vkhTIU3aR7oqRkwNkVvnn3ryuMaTCBDy5nKj98fN83tFFZR20_gBoCsu8QAvD_BwE
- [52] B.P. Gilbert, and K.J.R. Rasmussen, "Impact tests and parametric impact studies on drive-in steel storage racks", *Eng. Struct.*, vol. 33, no. 5, pp. 1410-1422, 2011. [<http://dx.doi.org/10.1016/j.engstruct.2011.01.017>]
- [53] R.E. McConnel, and S.J. Kelly, "Structural aspects of the progressive collapse of warehouse racking", *Struct. Eng.*, vol. 61A, pp. 343-347, 1983.
- [54] K.M. Bajoria, *Three dimensional progressive collapse of warehousing racking.*, University of Cambridge: Cambridge, UK, 1986.
- [55] A.L.Y. Ng, R.G. Beale, and M.H.R. Godley, "Methods of restraining progressive collapse in rack structures", *Eng. Struct.*, vol. 31, no. 7, pp. 1460-1468, 2009. [<http://dx.doi.org/10.1016/j.engstruct.2009.02.029>]
- [56] D. Dubina, I. Marginean, and F. Dinu, "Impact modelling for progressive collapse assessment of selective rack systems", *Thin-walled Struct.*, vol. 143, no. 10, p. 106201, 2019. [<http://dx.doi.org/10.1016/j.tws.2019.106201>]
- [57] L. Bertocci, D. Comparini, G. Lavacchini, M. Orlando, L. Salvatori, and P. Spinelli, "Experimental, numerical, and regulatory P-M-M domains for cold-formed perforated steel uprights of pallet-racks", *Thin-walled Struct.*, vol. 119, pp. 151-165, 2017. [<http://dx.doi.org/10.1016/j.tws.2017.06.001>]
- [58] P. Zampieri, A. Curtarello, E. Maiorana, and C. Pellegrino, "A review of the fatigue strength of shear bolted connections", *Int. J. Steel Struct.*, vol. 19, no. 4, pp. 1084-1098, 2019. [<http://dx.doi.org/10.1007/s13296-018-0189-5>]
- [59] F. Gusella, and M. Orlando, "Stiffness and resistance of brace-to-upright joints with lipped channel braces assembled flange-to-flange", *J. Construct. Steel Res.*, vol. 193, p. 107258, 2022.
- [60] F. Gusella, G. Lavacchini, and M. Orlando, "Monotonic and cyclic tests on beam-column joints of industrial pallet racks", *J. Construct. Steel Res.*, vol. 140, pp. 92-107, 2018. [<http://dx.doi.org/10.1016/j.jcsr.2017.10.021>]
- [61] CEN, *EN 15512. Steel static storage systems - adjustable pallet racking systems - principles for structural design.*, CEN European Committee for Standardization, 2009, p. 137.

© 2022 Gusella and Orlando

This is an open access article distributed under the terms of the Creative Commons Attribution 4.0 International Public License (CC-BY 4.0), a copy of which is available at: <https://creativecommons.org/licenses/by/4.0/legalcode>. This license permits unrestricted use, distribution, and reproduction in any medium, provided the original author and source are credited.