



Sedimentation Analysis Study in Lake Tondano Due to the Development of the Surrounding Area



Liany Amelia Hendratta^{1,*} , Susilawati Cicilia Laurentia² , Deuk Koo KOH³, La'la Monica¹ and Yosua Aditya Ratu¹

¹Department of Civil Engineering, Faculty of Engineering, Sam Ratulangi University, Indonesia

²Department of Civil Engineering, University of 17 August 1945, Semarang, Indonesia

³Dongbu Engineering Co. Ltd., Sowol-ro, Jung-gu, Seoul, Republic of Korea

Abstract:

Background: Population growth has increased the need for food, putting great pressure on the environment. This has triggered economic development and land use alternation, which have a major impact on the hydrological cycle. Natural and human factors have impacted the water catchment area of uncontrolled land cover changes in Lake Tondano, which is shallow from a depth of 36 meters to 14 meters due to soil erosion.

Objective: This research emphasizes the assessment of the lake, considering the efforts of conservation and analyzing its influence on the erosion rate and shallowing of the lake. The impact of land use dynamics on sedimentation is essential in providing alternative efforts for land conservation and, subsequently, optimum utilization.

Methods: The analyzing process requires rainfall data and land use maps, including soil type maps and land slope data, while the process itself is assisted by spreadsheets and GIS. In addition, the Universal Soil Loss Equation (USLE) and Sediment Delivery Ratio (SDR) model deliver the expected result of the total sediment production entering the lake.

Results: The calculated total value of actual sediment production governs the thickness of sediment deposition at the bottom of the lake.

Conclusion: The research concludes that the thickness of sediment deposition at lake bottom can be resolved by the total value of actual sediment production, whereas the value is analyzed from the USLE and SDR models previously correlated to bathymetry measurement.

Keywords: Sedimentation analysis, Population development, Land use changes, Bathymetry measurements, Universal Soil Loss Equation model, Sediment Delivery Ratio model.

© 2024 The Author(s). Published by Bentham Open.

This is an open access article distributed under the terms of the Creative Commons Attribution 4.0 International Public License (CC-BY 4.0), a copy of which is available at: <https://creativecommons.org/licenses/by/4.0/legalcode>. This license permits unrestricted use, distribution, and reproduction in any medium, provided the original author and source are credited.

*Address correspondence to this author at the Department of Civil Engineering, Faculty of Engineering, Sam Ratulangi University, Indonesia; E-mail: lianyhendratta@unsrat.ac.id

Cite as: Hendratta L, Laurentia S, KOH D, Monica L, Ratu Y. Sedimentation Analysis Study in Lake Tondano Due to the Development of the Surrounding Area. Open Civ Eng J, 2024; 18: e18741495347671. <http://dx.doi.org/10.2174/0118741495347671240910115151>



Received: August 09, 2024
Revised: August 27, 2024
Accepted: August 29, 2024
Published: ?? ??, 2024



Send Orders for Reprints to
reprints@benthamscience.net

1. INTRODUCTION

The dynamics of land use and land cover change is a global issue that is a concern and challenge in maintaining

the balance of nature. This significant change phenomenon causes problems in the ecosystem, as well as both land and water resource sustainability [1, 2]. Natural

and human factors in global land cover change, especially in terms of changes in forest cover to other types of land cover, have become one of the important issues in global change research [3]. In the global issue, the lake is a natural resource that undergoes uncontrolled land cover and land use development. Lake Tondano, which has an area of 46.87 km², is a natural resource that periodically attracts government attention since it has experienced degradation in the form of a decrease in capacity and water quality. This water resource is utilized for hydropower plants installed in series (cascade) and serves electricity needs for 2 provinces (North Sulawesi and Gorontalo), raw water for drinking water and irrigation, freshwater fisheries, and tourism. It is reported that in about 7 decades since 1936, Lake Tondano has silted up from a maximum water depth of 36 meters to 14 meters (siltation of 0.31 m/year) due to soil erosion and other causes, which has reduced the function of the lake [4, 5]. However, the correlation between the deposition thickness of lake bottom sediments and soil erosion is not discussed. The rapid process of land use change and land cover types in the lake catchment area in the form of deforestation, intensive agricultural practices, and urbanization in the highlands around Lake Tondano has a very important role in increasing the rate of land erosion and sediment formation process [6, 7, 8]. The study of the level of erosion hazard in the Lake Tondano catchment area, especially in the eastern part of the Lake Tondano sub-watershed, revealed that 20.28% of the land area is categorized at the level of severe to drastic erosion hazard [9, 10].

Further research conducted in 2014 reported an increase in the average erosion rate of 61.56% due to the distribution of land cover development for forests, shrubs, rice fields, residential areas, and water bodies [11]. The study on the level of erosion hazard of the Lake Tondano catchment area between 2008 and 2020 found that the Lake Tondano catchment area experienced land use change and had a significant impact on increasing the total erosion rate by 160% [6]. Examining the results of previous studies, it appears that changes in land use patterns and variations in land cover conditions are important driving forces for changes in stream runoff and sediment yields at all spatiotemporal scales that require immediate action to maintain the degradation of land and water resources in Lake Tondano. Several studies have been conducted in the Lake Tondano catchment area, but the impact of land use and land cover dynamics on the amount of sediment deposited in the lake and its influence on the siltation process has never been evaluated. The lack of primary data and adequate survey equipment has made it difficult to analyze the interdependencies between land use dynamics, sediment production, and siltation processes in the study area [12].

Moreover, during the last twelve years, various land conservation efforts in preserving its catchment area have been made by the Indonesian government; however, no

further investigation of positive impact evaluation has been conducted. This study takes these conservation efforts into account and analyzes how they affect the rate of erosion, sedimentation, and siltation of Lake Tondano [13]. All the above reasons imply that a study of the impact of land use dynamics on sedimentation in Lake Tondano is necessary to ascertain alternative land conservation measures for optimal utilization of natural resources [14].

2. MATERIALS AND METHODS

Geographically, the Lake Tondano watershed is located between 10°20'25" and 01°45'04" North Latitude and between 124°6'06" and 124°58'20" East Longitude extending from South to North. The watershed area of 186.62 km² is then divided into 123 sub-watersheds based on the tributaries that enter Tondano Lake. Around the study area, there are 10 rain gauge stations, but only 4 rain gauge stations affected the Tondano Lake watershed, namely the Malalayang-Kakaskasen rain gauge station, the Paleloan rain gauge station, the Noongan-Winebetan rain gauge station, and the Molompar-Rasi rain gauge station. The location is presented in Fig. (1).

This study uses maximum monthly rainfall data throughout 2008-2022 from the four rainfall stations above. Other secondary data in the form of land use maps along with soil type maps in the Tondano Lake watershed were obtained from the Tondano Watershed and Protected Forest Management Center (BPDASHL) Office. Both data characteristics of the Tondano Lake catchment, along with information on land slope in the study area, were processed and analyzed spatially using ArcMap 10.8 GIS and worksheet-based software.

The Universal Soil Loss Equation (USLE) model by Wischmeier and Smith was used to calculate surface erosion rates in this study because it is often used to assess the success of land conservation programs in Indonesia. In addition, this model shows similarities between theoretical calculations and factual observations in determining the amount of watershed soil loss; the USLE model is generally feasible in estimating the quantity of sediment entering reservoirs [5, 15]. The USLE model analyzes the average amount of soil loss (t/ha/year) based on the influence of several variables, namely rainfall erosivity, R , (KJ/ha), soil erodibility, K , (t/ha/R), topographic factor, LS (unitless), land cover index, C (unitless), and support particle index, P (unitless) as in Eq. (1).

$$A = R \times K \times LS \times C \times P \quad (1)$$

The USLE is only based on the amount of soil moved on a field [16]. Therefore, analyzing the total actual sediment production entering the lake is requisite for this study using the Sediment Delivery Ratio (SDR) model. Furthermore, the actual total sediment production value obtained is used as the basis for determining the thickness of sediment deposited on the bottom of Lake Tondano after being correlated with the results of bathymetry measurements [9].

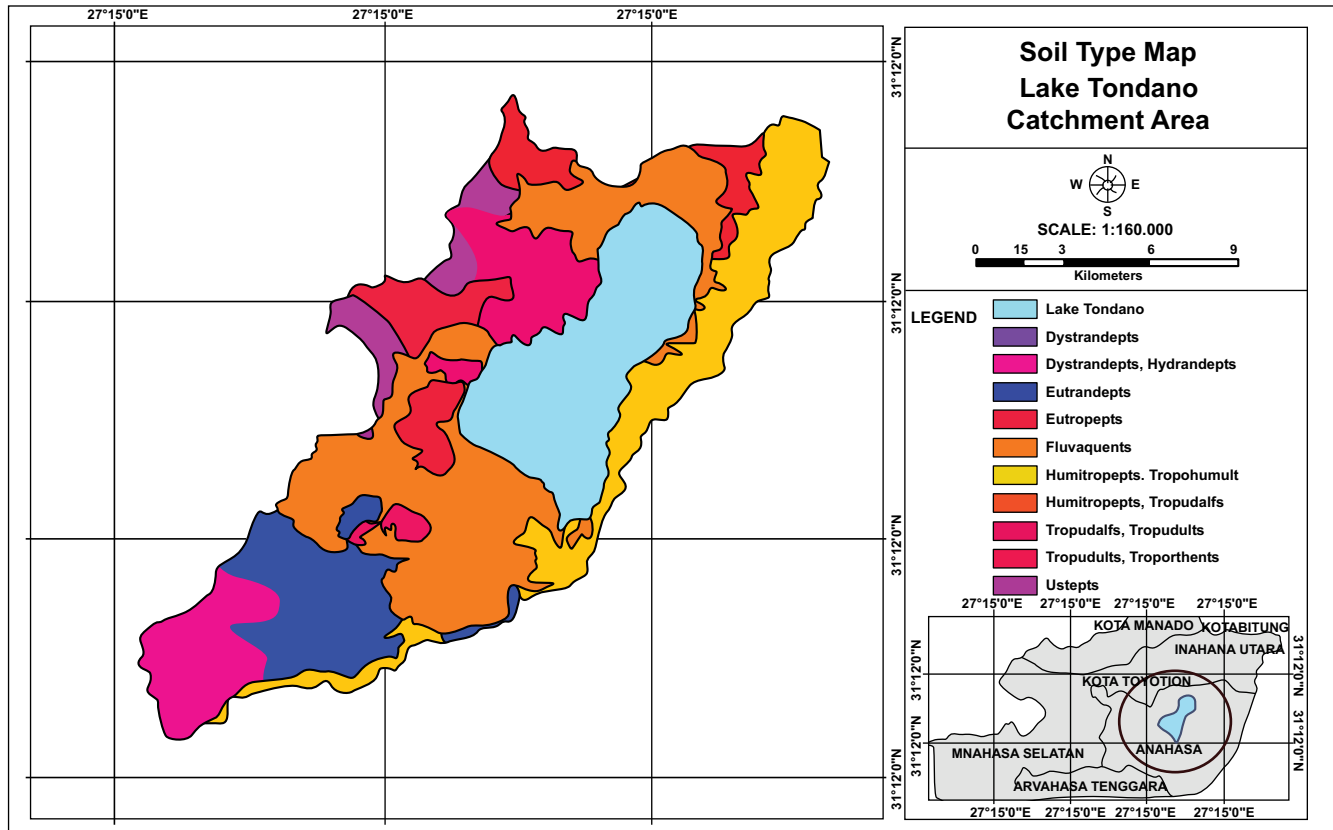


Fig. (2). Soil-type map of Tondano lake’s Water.
 Source: The Tondano Watershed and Protected Forest Management Center (BPDASHL).

Table 1. Soil type and soil erodibility factor (K).

Ordo	Great-group	K-Factor	Sources
Inceptisol	Dystrandepts	0.31	Arsyad <i>et al.</i> [17] Isma <i>et al.</i> [18] Dangler and El-Swaify in Silalahi <i>et al.</i> [19] Chay Asdak [20]. Chapter 7 Soil Erosion: 100-114 [21] Chay Asdak in Rantung M [22]. Chapter 7 Soil Erosion: 100-114 [21]
	Hydrandepts	0.32	
	Humitropepts	0.22	
	Ustepts	0.23	
	Udepts	0.23	
	Eutropepts	0.16	
	Eutrandepts	0.22	
Entisol	Dystropepts	0.23	
	Tropaquepts	0.20	
Entisol	Fluvaquents	0.178	Osok <i>et al.</i> [23]
Afisol/Inceptol (Mediteran)	Tropohumult	0.10	Undang K. and Suwardjo in Brigita Raco <i>et al.</i> [24]
Afisol/Inceptol (Mediteran)	Tropudalfs	0.23	Chapter 7 Soil Erosion: 100-114 [21]
Ultisol (Podsolik)	Tropudults	0.16	Chay Asdak in Rantung M [22].
Entisol/Inceptisol (Regosol)	Troporthents	0.14	Undang K. and Suwardjo in Brigita Raco <i>et al.</i> [24]

LS values were determined using spatial analysis of Geographic Information System (GIS) data management. The LS factor was obtained using vector values of slope (in degrees) derived using digital elevation model (DEM) data with the help of ArcMap software. For the simplification of the assessment, the LS factor was determined by the

Ministry of Forestry of the Republic of Indonesia, and it is based on the slope class [20]. It is presented in Table 2.

The slope map of Lake Tondano catchment area (Fig. 3) is the result of data processing from the Digital Elevation Model (DEM) map downloaded from the Geospatial Information Agency (BIG).

Table 3. Type of land use and C-factor.

Type of Land Use	C -Factor	Source
Primary Dryland Forest	0.001	Asdak [20]
Secondary Dryland Forest	0.005	Sinaga <i>et al.</i> [27]
Shrub	0.30	Isma <i>et al.</i> [18]
Dryland Agriculture	0.19	-
Mixed Dryland Agriculture	0.28	Isma <i>et al.</i> [18]
Paddy	0.01	-
Settlement	1.00	Asdak [20]
Open Land	1.00	-
Water	0.01	-

Table 4. Soil conservation measures and P-factor [17].

Conservation Method	P-Factor
Bench terrace according to type of construction	0.04-0.4
Strip crops	0.40
Soil management and planting based on the land slope	0.50
0-8%	0.75
8-20%	0.90
>20%	1.00
No soil conservation	1.00

2.5. Estimation OF Sedimentation Rates Using Sediment Delivery Ratio (SDR)

Analysis of sedimentation rates in the watershed can be done without direct sediment sampling in the field. The sediment Delivery Ratio (SDR) method was chosen for this study because it focuses more on the source of sediment from the watershed, the distance of the source to the reservoir/lake, the eroded soil particles, and the transport system along with the characteristics of the watershed [20]. There are several ways to determine the value of SDR, and this study used the determination of SDR values as a function of watershed size [28]. Furthermore, the analysis of the amount of potential sediment (Spot) that occurs is the actual erosion value (Eact) multiplied by the SDR value.

2.6. Bathymetric Survey

Bathymetric surveys were conducted to obtain the overall cross-sectional shape as well as the capacity curve of Lake Tondano. This curve will be used to analyze changes in the thickness of deposited sediments, the main cause of lake siltation. Some tools, such as Hemisphere VS330 for navigation and Teledyne ODOM ECHOTRAC CV100 of single beam echosounder, are applied in surveys by collecting water depth data at some designated points or lanes. The water depth measurement was done by echo sounding and terrestrial topographic measurement to partially connect the cross-section of the lake from echo sounding to the maximum elevation of lake inundation.

Theodolite and communication equipment are operated to control the perpendicular position between the bow of the dredged and lakeshore waterline. The total tracer path in this study was 860 km, with an average interval distance of 50 meters and a tracer speed of less than 5 knots.

3. RESULTS AND DISCUSSION

3.1. Land Cover Alteration in the Catchment Area of Tondano Lake

Land cover conditions in the Tondano Lake catchment are divided into various types, namely primary dryland forest, secondary dryland forest, shrubs, dryland agriculture, mixed dryland agriculture, rice fields, settlements, open land, and water bodies (Fig. 4). Based on data from BPHDSL Tondano, the distribution of land cover between 2020 - 2022 has experienced dynamic changes in the land cover area as listed in Table 5. The largest addition of land cover area to the total land is dryland agriculture and mixed dryland agriculture, amounting to 37.71% and 17.57%, respectively. In contrast, by the end of 2022, the decrease in land cover area occurred in paddy fields by 30.58% and settlements by 6.6% from the previous land area. The phenomenon of reducing the area of rice fields and settlements occurred due to a decrease in the capacity of the lake, and its overflowing water inundated the land located on the shore of the lake. The area of dry land for agriculture taking over open land is one effort of conservation by the government.

3.2. Rainfall Analysis

The Thiessen polygon method determines the area of influence of each rainfall station based on polygon lines between all existing rainfall stations. Thiessen Polygon analysis of the Tondano Lake watershed using four rainfall stations can be seen in Fig. (5). The four rainfall stations that directly affect the Tondano Lake watershed and their areas of influence are the Malalayang-Kakaskasen rain gauge station (261.36 Ha; 1%), the Paleloan rain gauge station (7,988.96 Ha; 43%), the Noongan-Winebetan rain

gauge station (9882.33 Ha; 53%), and the Molompar-Rasi rain gauge station (529.35 Ha; 3%). Each rain gauge station has recorded different rainfall data, so it is necessary to analyze regional rainfall values that represent rainfall

events throughout the Lake Tondano catchment. Maximum monthly rainfall data representing the four rain gauge stations varied between 12.87 cm and 37.99 cm.

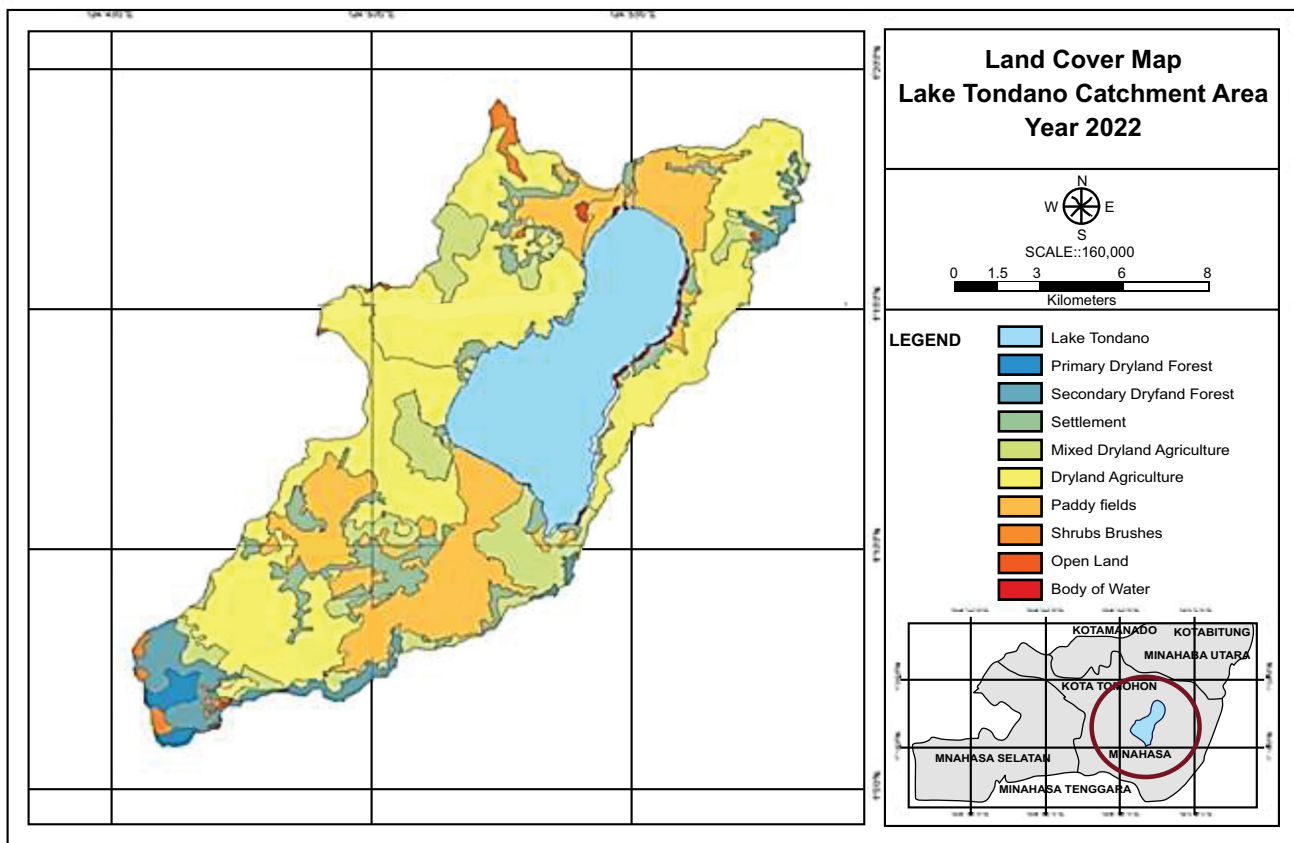


Fig. (4). Land use map of tondano lake’s watershed.
Source: The tondano watershed and protected forest management center (BPDASHL) office.

Table 5. Change of land use in Tondano lake watershed.

Types of Land Use in Tondano Lake’s Watershed	Area				Changes in Total Land Area	
	Year 2021 (Ha)	Percent (%)	Year 2022 (Ha)	Percent (%)	Ha	%
Primary Dryland Forest	253.08	1.36	252.89	1.36	-0.2	0.01
Secondary Dryland Forest	428.96	2.30	625.36	3.35	+196.4	6.28
Shrub	246.09	1.32	354.34	1.90	+108.2	3.46
Settlement	1,708.65	9.16	1,232.45	6.60	-476.2	15.23
Open Land	127.32	0.68	54.48	0.29	-164.1	5.25
Water	120.48	0.65	120.60	0.65	+0.1	0.00
Dryland Agriculture	6,499.93	34.83	7,036.64	37.71	+536.7	17.17
Mixed Dryland Agriculture	2,602.91	13.95	3,279.20	17.57	+676.3	21.63
Paddy Fields	6,674.73	35.77	5,706.19	30.58	-968.5	30.98
Total	18,662.15	100	18,662.15	100	14,954.203	100

3.3. Rainfall Erosivity Index (R)

The erosivity values were analyzed with the Bols equation using the magnitude of the annual rainfall values of the region [29]. For the 2021 and 2022 events (Table 6), annual rainfall of 3,024.49 mm/year and 2,874.21 mm/year, respectively, resulted in erosivity values of 3,100.44 MJ.cm/ha.jm/yr and 2,663.14 MJ.cm/ha.jm/yr.

Fig. (6) presents the relationship between annual rainfall amount and erosivity index for the period 2008-2022. This figure presents the annual rainfall of the region as well, showing a high correlation between annual rainfall and erosivity value and yet illustrating more soil particle segregation and discharge by the flow as a result of the higher kinetic energy of stormwater.

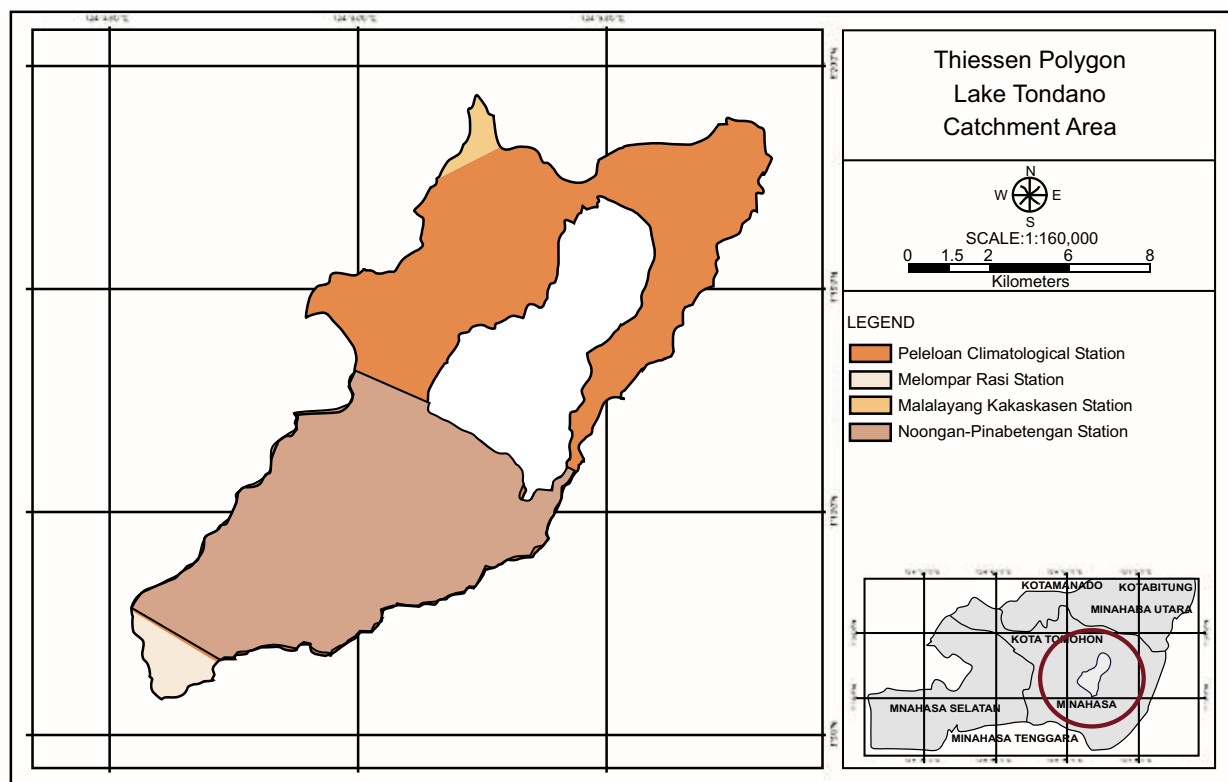


Fig. (5). Area of influence of the rain gauge stations.
Source: Result Analysis.

Table 6. Rainfall erosivity analysis.

Year	MNTH	Rain	Days	MAXP	Rm	R Total
		[cm]	[days]	[cm]		
2021	Jan	18.512	18	4.35	103.20	3,100.44
	Feb	23.960	15	4903.45	333.19	-
	Mar	32.090	19	2653.44	366.76	-
	Apr	20.319	14	4207.88	302.10	-
	May	27.374	15	5700.62	449.71	-
	Jun	24.849	14	2316.30	278.32	-
	Jul	26.310	15	4277.82	282.29	-
	Aug	13.378	10	381.47	127.08	-
	Sep	37.986	18	2103.65	382.23	-
	Oct	24.264	11	2947.67	91.37	-
	Nov	24.329	17	2657.47	167.43	-
	Dec	29.079	19	2738.49	216.76	-

(Table 6) contd.....

Year	MNTH	Rain	Days	MAXP	Rm	R Total
		[cm]	[days]	[cm]		
-	-	302.449	-	-	-	-
2022	Jan	22.245	17	3467.62	262.83	2,663.14
	Feb	16.695	17	4952.35	161.04	-
	Mar	25.634	19	2005.20	225.63	-
	Apr	33.188	18	2440.49	311.11	-
	May	22.284	15	2836.29	243.98	-
	Jun	16.214	12	2199.58	126.81	-
	Jul	14.827	14	1781.32	110.95	-
	Aug	18.524	17	1947.21	145.97	-
	Sep	12.870	14	2967.32	117.74	-
	Oct	33.319	15	1726.85	303.99	-
	Nov	36.970	21	2625.56	334.51	-
	Dec	34.650	16	14.34	318.60	-
-	-	287.421	-	-	-	-

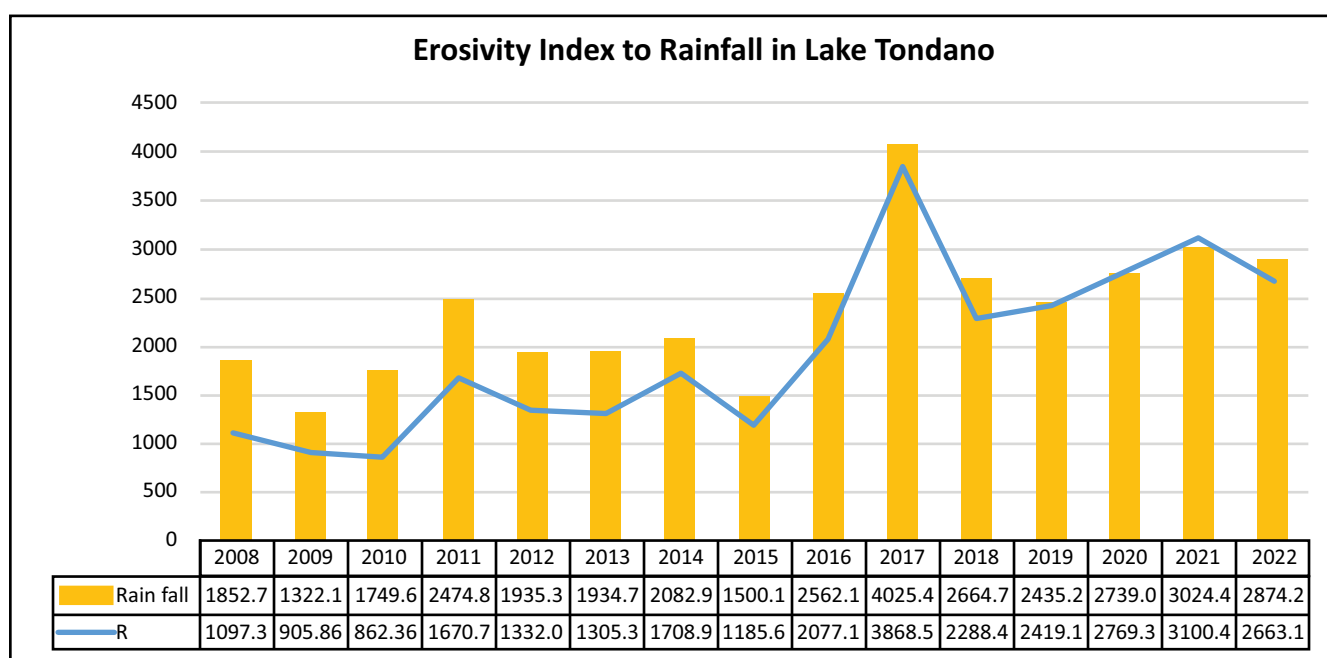


Fig. (6). Erosivity index to rainfall in lake Tondano.
Source: Result Analysis.

Table 7. Soil erosivity (K) and slope length gradient (LS) factor.

Soil Type		Area, A (Ha)	Erodibility (K)		The Slope Length Gradient (LS) Factor				
			K Factor	A × K	S Value (%)	Slope Length	L Value	LS Value	LS × A
						(m)	(m)	-	
Dystrandeps,	Humitropepts	1,646.370	0.28	460.98	11.186	150.5	2.62	0.878	1,444.72
Humitropepts,	Dystropepts	397.125	0.18	71.48	11.186	150.5	2.62	0.878	348.48
Humitropepts,	Dystropepts	3,105.405	0.18	558.97	11.186	150.5	2.62	0.878	2,725.05
Tropudults,	Dystropepts	254.773	0.18	45.86	11.186	150.5	2.62	0.878	223.57
Tropudults,	Dystropepts	124.666	0.18	22.44	11.186	150.5	2.62	0.878	109.40
Tropudults,	Dystropepts	210.779	0.18	37.94	11.186	150.5	2.62	0.878	184.96

(Table 7) contd....

Soil Type		Area, A (Ha)	Erodibility (K)		The Slope Length Gradient (LS) Factor				
			K Factor	A × K	S Value (%)	Slope Length	L Value	LS Value	LS × A
				(m)		(m)	-		
Ustepts	Udepts	24.514	0.23	5.64	11.186	150.5	2.62	0.878	21.51
Ustepts	Udepts	406.845	0.23	93.57	11.186	150.5	2.62	0.878	357.01
Ustepts	Udepts	259.856	0.23	59.77	11.186	150.5	2.62	0.878	228.03
Ustepts	Udepts	339.033	0.23	77.98	11.186	150.5	2.62	0.878	297.51
Fluvaquents	Tropaquents	4,896.056	0.19	930.25	0.439	50	1.51	0.166	813.31
Eutropepts	-	814.125	0.16	130.26	3.166	350.5	3.99	0.482	392.34
Humitropepts,	Dystropepts	68.441	0.23	15.74	1.496	500	4.77	0.386	26.45
Eutropepts	Distrandepts	434.581	0.24	104.30	7.374	350.5	3.99	0.799	347.29
Dystrandeps,	Humitropepts	31.003	0.28	8.68	11.186	150.5	2.62	0.878	27.21
Fluvaquents	Tropaquents	1,041.288	0.19	197.84	0.439	50	1.51	0.166	172.97
Eutropepts	Distrandepts	471.638	0.24	113.19	6.166	350.5	3.99	0.708	334.15
Eutrandepts	Eutropepts	127.832	0.19	24.29	1.496	350.5	3.99	0.354	45.20
Tropudalfs,	Dystropepts	162.386	0.21	34.10	3.166	150.5	2.62	0.390	63.35
Tropudalfs,	Dystropepts	1,465.711	0.21	307.80	3.166	150.5	2.62	0.390	571.78
Eutrandepts	Eutropepts	1,692.008	0.19	321.48	1.496	350.5	3.99	0.354	598.28
Eutropepts	-	466.729	0.16	74.68	3.166	350.5	3.99	0.482	224.92
Dystrandeps	Eutropepts	78.986	0.24	18.96	6.166	75	1.85	0.482	38.06
Total	-	18,520.151	-	3,716.209	-	-	-	14.812	9,595.58
Average	-	-	K = 0.201		-	-	-	LS = 0.518	

3.4. Soil Erodibility Factor (K)

Table 1 shows the soil erodibility value (K) of each soil type in the Lake Tondano catchment, which varies between 0.10 - 0.32. The grouping of soil types is based on the similarity of the nature of the forming material, geographical location, and distribution according to a certain pattern. Furthermore, the value of soil erodibility throughout the Tondano Lake catchment area is obtained from the average of each soil type erodibility value with the influence of each area. From the results of the analysis, the value of soil erodibility (K) of the entire Tondano Lake catchment is 0.201, as shown in Table 7.

3.5. The Slope Length Gradient (LS) Factor

In addition to the soil type itself, the length and slope where each soil type is located also affect the erosion rate in an area. Large slopes result in land erosion due to increased surface flow rates. Table 2 presents the classification of slope classes with the percentage of land slope and LS value. Based on this grouping, the Lake Tondano catchment has 36.55% of the area with slopes greater than 40%, and the remaining 63.4% is divided into several groups of slope percentages. The length and slope factor (LS) of the Tondano Lake catchment is the calculated average of soil types with their respective areas and LS = 0.518 (Table 7).

3.6. Crop Management Factor (C) and Support Practice Factor (P)

The values of C and P are coefficients that represent the choice of plant species and the treatment of certain land management systems in the Lake Tondano catchment. In this study, the value of C is the average value of 9 types of land cover (Table 3) with the effect of the area of each type of land cover (Table 5). The C values

for 2021 and 2022 were 0.211 and 0.199, respectively. The value of P is determined based on the condition that conservation has been carried out in the Lake Tondano catchment, ranging between 0.50-0.90 according to Table 4. Conservation is carried out with a land cover management approach based on the distribution of the dominant slope in the Tondano Lake catchment. Replanting on open land and land with steep slopes can prevent rainwater from falling directly on the ground surface, thereby reducing soil degradation due to rainwater and runoff.

3.7. Determination of Erosion Rate and Sediment Potential

The erosion rate in the Lake Tondano catchment was analyzed using the USLE model as Eq. (1) for each type of land cover. The erosion rate obtained in 2021 was 51.09 tons/ha/year, and in 2022 was 41.281 tons/ha/year, as shown in Table 8. The value of the erosion rate in the last 2 years shows a decrease compared to the results of the previous study, where the erosion rate was obtained as 95.66 tons/ha/year. A moderate erosion hazard level was with an erosion rate of 60-180 tons/ha/year [10].

Government land conservation efforts continue to be carried out to reduce erosion rates in the Tondano Lake catchment area. From this study, it was found that in 2021 and 2022, the level of erosion hazard was mostly in a mild condition with erosion rates between 15-60 tons/ha/year, based on the Guidelines for the Preparation of Watershed Land and Forest Rehabilitation Technical Plans (RtkRHLAS). Furthermore, the map of the erosion hazard level of the entire Lake Tondano catchment area in 2022 can be seen in Fig. (7).

In addition to the analysis of erosion rate

determination, potential erosion (Epot) can be analyzed based on the influence of rainfall erosivity factor (R), soil erodibility (K), Slope length gradient factor (LS), and land area. The calculation of the actual erosion value is based on the E potential value, including the influence of the management of crops and some factors of soil conservation. Furthermore, the analysis of the amount of potential sediment (Spot) entering the lake is a function of Eakt and the Sediment Delivery Ratio (SDR) value.

SDR is defined as the ratio of sediment delivery to actual erosion in a watershed. The specifics of SDR include the source of sediment coming from the watershed, the distance of the source to the lake, the soil

particles eroded, the transport system, and the characteristics of the watershed. The determination of the SDR value is a function of watershed size [28] and is generally less than 1 because there can be deposition on the land surface and in the stream system.

The catchment area of Lake Tondano is 18,662.15 Ha, and from the table of the relationship between watershed area and sediment delivery ratio [28], for the catchment area between 10,000-20,000 Ha, the SDR value is 0.11. Thus, the amount of actual sediment (Eact) for 2021 and 2022 was 140,897.55 tons/year (53,168.89 m³/year) and 113,846.61 tons/year (42,960.99 m³/year), respectively.

Table 8. The USLE model and erosion hazard level.

Year	R	K	LS	C	P	USLE		Epot		Eact		Classes
						Erosion (A) (ton/ha/yr)		(ton/yr)	(ton/ha/yr)	(ton/yr)	(ton/ha/yr)	Erosion
2021	3,100.437	0.20	0.518	0.211	0.75	51.090		8,081,274.94	322.333	1,280,886.78	51.090	II
2022	2,663.142	0.20	0.518	0.199	0.75	41.281		6,941,468.37	276.871	1,034,969.18	41.281	II
Total	5,763.580	-	-	-	-	92.371		15,022,743.30	-	2,315,855.960	-	-

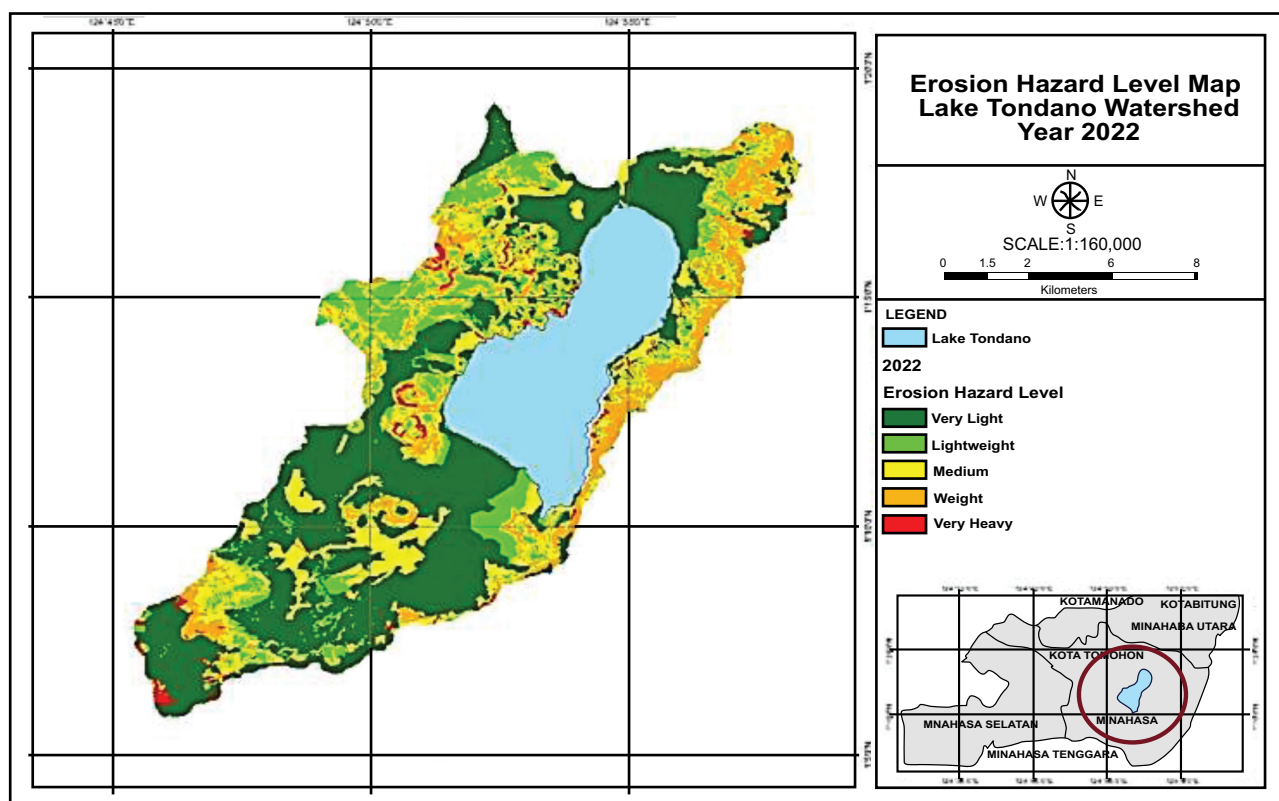


Fig. (7). Erosion hazard level map in the Tondano lake watershed. Source: Result Analysis.

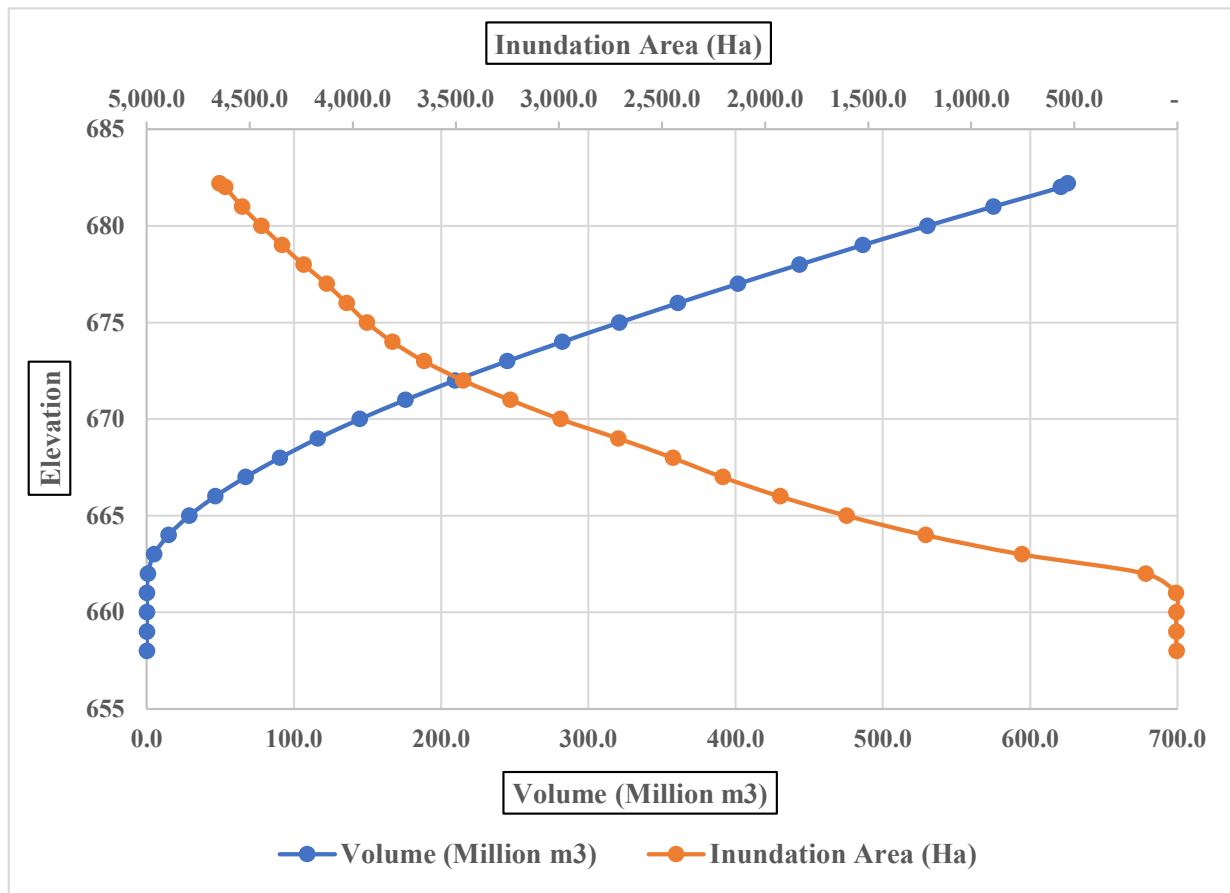


Fig. (8). Tondano lake capacity curve.
Source: Result Analysis.

In this study, bathymetric measurements of Lake Tondano were carried out in an area covering all the space available to hold water, both in submerged conditions and above the water level. The capacity curve of the lake is an expression of the cross-sectional shape of the lake, which is obtained by bathymetric measurements. This curve illustrates the relationship between each increase in lake body elevation to the water surface area and storage volume of Lake Tondano, as shown in Fig. (8). From this curve, the elevation of the lake bed can also be analyzed due to the volume of sediment that will settle in the lake (Potential sediment; Spot).

Based on Fig. (8), the bottom elevation of Lake Tondano is at +662 meters. The potential sediment generated during the analysis year period (2020 - 2022) is 55,191.13 m³/year (2021) and 43,977.24 m³/year (2022). All the sediments produced enter the lake and influence the increase in the thickness of the sediment deposited at the bottom of the lake. This condition can result in the process of shallowing and reduce the capacity of the lake. Using the FORECAST.LINEAR function in Excel, this total potential sediment of 99,168.37 m³/year has the potential to increase the bottom elevation of Lake Tondano

(siltation) by 0.024 meters within 2 years or 0.021 m./year. This result shows a great decrease from the previous study, which reported a shallowing of 0.31 m/year.

CONCLUSION

The increase in the erosion rate caused by changes in land cover in the Lake Tondano catchment area needs to be controlled so as not to worsen the sedimentation. Control of erosion can be carried out through land conservation at the catchment area, which is a determinant of the sedimentation rate process in Lake Tondano. Further, an alternative scenario for land management or conservation, namely in the form of land cover utilization management planning with soil management and planting over the entire catchment area with a slope of 8-20%, has reduced the amount of erosion and sedimentation by 58.18%.

The class II erosion hazard level has 15 to 60 tons/ha/year of erosion with an average of 46.19 tons/ha/year, which defines the erosion class in the catchment area. However, from the Erosion Hazard Level Map, it appears that areas in the Tondano Lake catchment area with slopes of 25-40% and >40% are still at very high

erosion hazard levels. Therefore, land cover management and land conservation efforts are very necessary for these areas.

The thickness of sediment deposited at the bottom of Lake Tondano can be determined from the total value of actual sediment production analyzed from the USLE and SDR models after being correlated with the results of bathymetry measurements.

AUTHORS' CONTRIBUTIONS

It is hereby acknowledged that all authors have accepted responsibility for the manuscript's content and consented to its submission. They have meticulously reviewed all results and unanimously approved the final version of the manuscript.

LIST OF ABBREVIATIONS

USLE	=	Universal Soil Loss Equation
LS	=	Length Gradient
GIS	=	Geographic Information System
DEM	=	Digital Elevation Model

CONSENT FOR PUBLICATION

Not applicable.

AVAILABILITY OF DATA AND MATERIALS

The data and supportive information are available within the article.

FUNDING

None.

CONFLICT OF INTEREST

The authors declare no conflict of interest, financial or otherwise.

ACKNOWLEDGEMENTS

The support from the Faculty of Engineering at Sam Ratulangi University is gratefully acknowledged.

REFERENCES

- [1] T.O.A.D. Babaremu Kunle, "Impacts of land use and land cover changes on hydrological response: A review of current understanding and implications for watershed and water resources management", *TIMJ*, vol. 19, no. 1, pp. 256-267, 2024.
- [2] M.S.d.M. Martins, C.A. Valera, M. Zanata, R.M.B. Santos, V.L. Abdala, F.A.L. Pacheco, L.F.S. Fernandes, and T.C.T. Pissarra, "Potential impacts of land use changes on water resources in a tropical headwater catchment", *Water*, vol. 13, no. 22, pp. 1-21, 2021. [PMID: 34976403]
- [3] N. Gudino-Elizondo, T.W. Biggs, R.L. Bingner, E.J. Langendoen, T. Kretzschmar, E.V. Taguas, K.T. Taniguchi-Quan, D. Liden, and Y. Yuan, "Modelling runoff and sediment loads in a developing coastal watershed of the US-Mexico Border", *Water*, vol. 11, no. 5, pp. 1-1024, 2019. [PMID: 31583124]
- [4] E. Dongbu, *Preparation of water resources strategic implementation plan for priority lakes - East Region.*, Cascade Mahakam - Tondano: Jakarta, 2022.
- [5] V. Kurniawan, P. Wati Asriningsih, and K. Anugerah Tiffanyputri, "Comparison in estimating reservoir lifetime by universal soil loss equation and site observation", *GEOMATE Journal*, vol. 23, no. 98, pp. 92-99, 2022.
- [6] B. Raco, A. Wicaksono, and R. W. Triweko, "Level of erosion hazard due to land cover changes in the tondano lake catchment area", *Civil Eng. J.*, vol. 11, no. 1, pp. 63-76, 2022.
- [7] J. Daramola, E.J. Adepehin, T.M. Ekhwan, L.K. Choy, J. Mokhtar, and T.S. Tabiti, "Impacts of land-use change, associated land-use area and runoff on watershed sediment yield: Implications from the kaduna watershed", *Water*, vol. 14, no. 3, p. 325, 2022. [http://dx.doi.org/10.3390/w14030325]
- [8] Igor Bogunovic, Leon Josip Telak, Paulo Pereira, Vilim Filipovic, Lana Filipovic, Aleksandra Percin, Boris Durdevic, Márta Birkás, Igor Dekemati, and Jesus Rodrigo Comino, "Land management impacts on soil properties and initial soil erosion processes in olives and vegetable crops", *J. Hydrol. Hydromech.*, vol. 68, no. 4, pp. 328-337, 2020. [http://dx.doi.org/10.2478/johh-2020-0033]
- [9] A. T. Moningkey, "Study of bathymetry and sedimentation in Tondano Lake", *IOP Conf. Ser.: Earth Environ. Sci.*, vol. 986, p. 012038, 2022.
- [10] A.B.E.M.W.F.H. Marizca Monica Rantung, "Analysis of land erosion and sedimentation in the panasen sub-das, minahasa regency", *Jurnal Sipil Statik*, vol. 1, no. 5, pp. 309-317, 2013.
- [11] Teddy Dolfie Sorey, Mohammad Bisri, and Dian Sisinggih, "Study on handling sedimentation of Lake Tondano", *J. Water Resour. Eng.*, vol. 7, no. 2, pp. 259-267, 2016.
- [12] E.M. Basri, "Identification of critical erosion prone areas in temengor reservoir basin using universal soil loss equation (USLE) and geographic information system (GIS)", In: *International Conference on Ecology and Biodiversity across Time and Space*, . Penang Island, Malaysia, 15-16 August 2018,
- [13] Y.M. Tessema, J. Jasińska, L.T. Yadeta, M. Switoniak, R. Puchałka, and E.G. Gebregeorgis, "Soil loss estimation for conservation planning in the welmel watershed of the genale dawa basin, Ethiopia", *Agronomy*, vol. 10, no. 6, p. 777, 2020. [http://dx.doi.org/10.3390/agronomy10060777]
- [14] M. Zhou, J. Deng, Y. Lin, M. Belete, K. Wang, A. Comber, L. Huang, and M. Gan, "Identifying the effects of land use change on sediment export: Integrating sediment source and sediment delivery in the Qiantang River Basin, China", *Sci Total Environ.*, vol. 686, pp. 38-49, 2019. [http://dx.doi.org/10.1016/j.scitotenv.2019.05.336] [PMID: 31176141]
- [15] G. Girmay, A. Moges, and A. Muluneh, "Estimation of soil loss rate using the USLE model for Agewmariyam Watershed, northern Ethiopia", *Agric & Food Secur.*, vol. 9, no. 9, pp. 1-12, 2020.
- [16] S.W. Trimble, and P. Crosson, "U.S. Soil erosion rates--myth and reality", *Science*, vol. 289, no. 5477, pp. 248-250, 2000. [http://dx.doi.org/10.1126/science.289.5477.248] [PMID: 17750403]
- [17] U. Arsyad, R. A. Barkey, W. Wahyuni, and K. K. Matandung, "Characteristics of landslides in the tangka river basin", *J. Forests Soc.*, vol. 10, no. 1, pp. 203-214, 2018.
- [18] F.I.I.N.I. Isma, "Analysis of erosion potential in deli watershed, north sumatra using geographic information system (GIS)", *ENG-J Appl. Tech.*, vol. 4, no. 1, pp. 25-36, 2017.
- [19] R.S.R. Silalahi, "Mapping of erosion hazard levels in farmer Sub-DAS", *J. Agroecotech.*, vol. 5, no. 1, pp. 185-193, 2017.
- [20] Asdak C, *Hydrology and watershed management*, Gadjah Mada University Press: Yogyakarta, 2022, pp. 1-618.
- [21] H.D. Foth, *Fundamentals of Soil Science - 8E.*, John Wiley & Son: Canada, 1991.
- [22] M.B.A.W.E.M.H.F. Rantung, "Analysis of land erosion and sedimentation in the Panasen sub-basin, Minahasa district", *Civ. Stat. J.*, vol. 1, no. 5, pp. 309-317, 2013.
- [23] R. Osok, S. Talakua, and E. Gaspersz, "Analysis of soil erosion factors, and erosion danger levels using the Rusle method in the Wai Batu Merah Watershed, Ambon City, Maluku Province", *J. Agric. Cult.*, vol. 14, no. 2, pp. 89-96, 2018.

- [http://dx.doi.org/10.30598/jbdp.2018.14.2.89]
- [24] A.W.R.W.T. Brigitha Raco, "Erosion danger level due to land cover changes in the tondano lake catchment area", *Civil Eng. J.*, vol. 11, no. 1, pp. 63-76, 2022.
- [25] T. Herawati, "Spatial analysis of erosion danger level at cisadane watershed area bogor district", *J. For. Res. Nat. Conserv.*, vol. 7, no. 4, pp. 413-424, 2010.
- [26] M. Mohammadi, AK Khaledi Darvishan, V. Spalevic, B. Dudic, and P. Billi, "Analysis of the impact of land use changes on soil erosion intensity and sediment yield using the IntErO model in the Talar Watershed of Iran", *Water*, vol. 13, no. 6, p. 881, 2021.
- [PMID: 35874117]
- [27] A. D. Riccharo, and P. R. Sinaga, "Land cover changes in Pugung Tampak Resort, South Bukit Barisan National Park (TNBBS)", *Sylva Lestari J.*, vol. 2, no. 1, pp. 77-86, 2014.
[http://dx.doi.org/10.23960/jsl1277-86]
- [28] A.R. Robinson, "Sediment yield as a function of upstream erosion", In: *Universal Soil Loss Equation: Past, Present, and Future.*, vol. 8. John Wiley & Sons: Brisbane, 1979, pp. 7-16.
- [29] Erni Yulianti, "Model of rainfall erosion index for predicting the potential erosion rate by using a rainfall simulator", *IOP Conf. Ser.: Earth Environ. Sci.*, vol. 437, p. 012045, 2020.